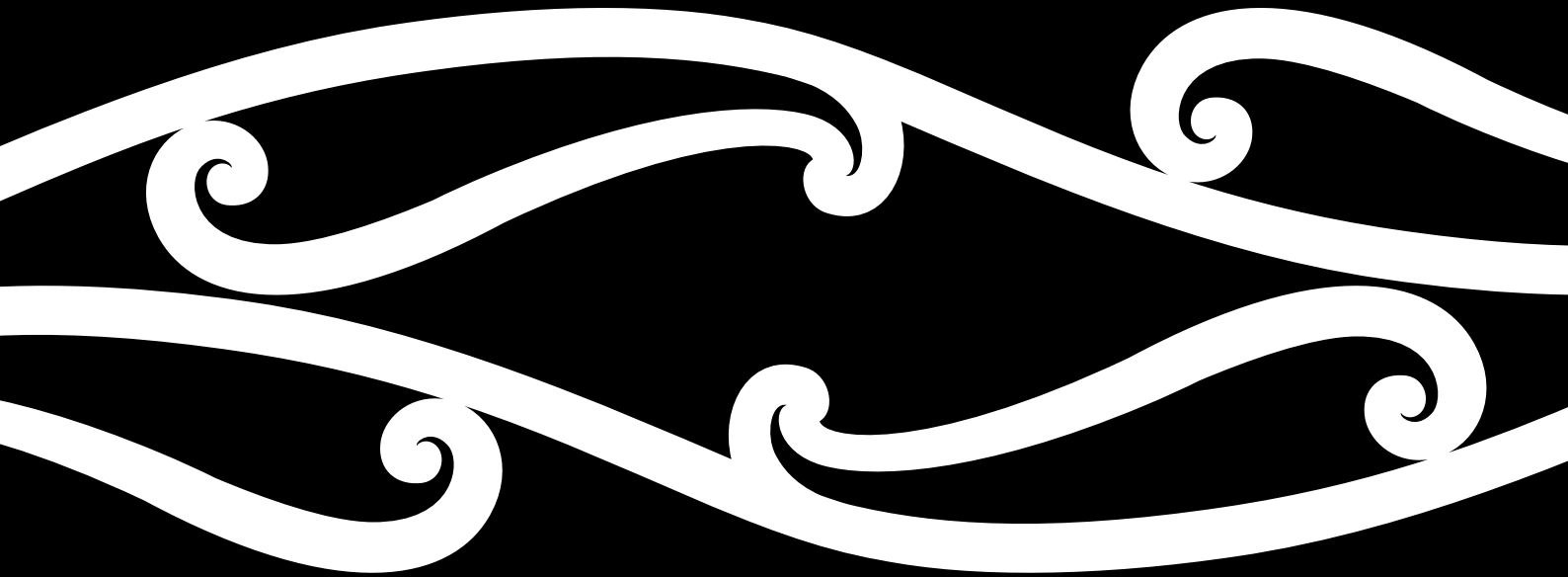


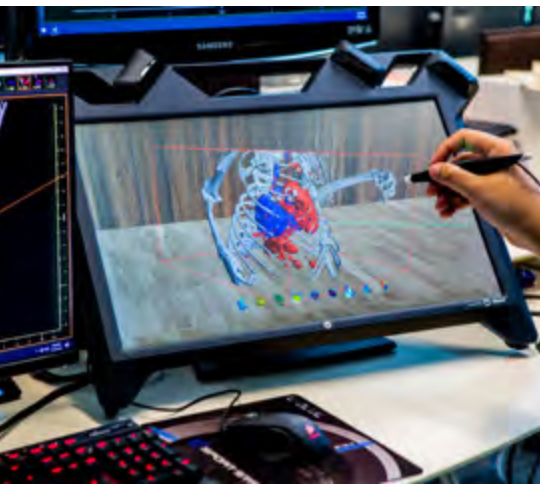
2024



Postgraduate Prospectus

Whakatairanga Tāura





FUTURE FORWARD

'I know that every day I spend on my research is geared towards improving the lives of people.'

Charles
PhD in Health Sciences



Contents

- 1 Welcome to UC
- 2 Why postgrad?
- 4 Why UC?
- 6 Te Kura Tāura | UC Graduate School
- 8 Research

Study options

- 11 Study pathways
- 14 Toi Tangata | Arts
- 19 Umanga | Business
- 24 Ako | Education
- 31 Pūhanga | Engineering
- 37 Kōwaiwai | Fine Arts
- 39 Ngahere | Forestry
- 41 Oranga | Health
- 46 Ture me te Muru Taihara | Law

- 48 Puoro | Music
- 50 Hanga Otinga | Product Design
- 52 Pūtaiao | Science
- 59 Tauwhiro Hapori | Social Work
- 61 Hauora Reo | Speech and Hearing
- 63 Conversion qualifications
- 65 Whakangungu Ngaiotanga UC Executive Education
- 66 Tuihono UC | UC Online

Lifestyle and support

- 69 Accommodation
- 70 Support
- 72 Careers

Apply and enrol

- 74 How do I apply and enrol?
- 76 International students
- 78 Scholarships
- 80 Important dates

Rainbow Diversity Support



UC is proud to partner with Ngāi Tūāhuriri and Ngāi Tahu to uphold the mana and aspirations of mana whenua.

*Published Oketopa | October 2023.
Information is correct at the time of print, but is subject to change. The University's official regulations are at www.canterbury.ac.nz/regulations*



Welcome to UC



Postgraduate programmes are a pathway for deeper knowledge and study, no matter whether you are a recent graduate, or mid-career seeking the next step of opportunity.

UC has a fantastic array of postgraduate programmes – whether you want to study Antarctic aerosols, aerospace engineering, ‘big data’ science, criminal justice, child development, Māori and Indigenous leadership, or urban sustainability. At higher levels, we have Research Masters and Doctoral Research programmes, with many large research teams.

Your postgraduate programme will be backed by passionate academics and supervisors, world-class research facilities and teaching spaces, knowing that your degree is gained at a university recognised on the world stage as evidenced by our top 300 global QS ranking, and 50th Times Higher Education Impact ranking.

Finally, you will find many professional development courses at UC that will help achieve your first, or next, career aspiration.

I encourage you to think about enrolling for postgraduate study at UC, and join our institutional journey of making a difference in Aotearoa New Zealand and the world.

Ngā mihi,

Professor Ian Wright
Tumu Tuarua Rangahau | Deputy Vice-Chancellor (Research)



As Amo Rangahau | Dean of Postgraduate Research at the University of Canterbury, I look forward to supporting you in your research journey. Postgraduate research allows you to push the very boundaries of thought and develop knowledge with insight and impact. My role is to ensure you are supported and empowered along this journey so that you achieve your goals and aspirations.

UC’s values of Whanaungatanga, Tiakitanga, and Manaakitanga underpin our work with postgraduate research students. We welcome a plurality of students whose diverse backgrounds strengthen UC and bring us closer. We encourage research that contributes positively to our community (local and international) and environment. We will strive to support you, and our colleagues who mentor you during your research journey, in a way that values your strengths and empowers you in your research journey. Whatever your chosen field, your research is shaping our future. We would be delighted if you chose UC as the place where you embark upon the next phase of that journey.

Professor Megan McAuliffe
Amo Rangahau | Dean of Postgraduate Research



Nāia te mihi ki a koutou katoa!

Warm greetings to you all!

It is through education and ongoing study that you can make a difference for yourself, for others in your community, and the world. Through postgraduate study at the University of Canterbury, you will have the opportunity to make a positive impact, challenge existing knowledge, and help create new understandings. When you are part of Te Kura Tāura, our Graduate School, you will be part of a whānau. You will be supported, accepted for who you are and what you bring, and nurtured throughout your time with us.

Nau mai, haere mai!

Liz Brown
Amokapua Pākāano Tuarua | Deputy Assistant Vice Chancellor Māori



120+
qualifications in subjects ranging from Antarctic Studies to Writing

Why postgrad?

Curious about a specialist topic? Maybe you want to develop your profession, or change direction completely?

Whatever your goals, UC offers 120 graduate and postgraduate qualifications and provides the support to help you achieve them.

Advantages of further study

Graduate and postgraduate study can provide you with:

- specialist skills and applied experience
- enhanced knowledge
- entry into specialised occupations
- advanced critical thinking, evaluation, and communication skills
- the opportunity to conduct original research
- smaller classes and closer links with staff
- salary advantage – research shows that study at postgraduate level (master’s and PhD) could give you a salary advantage.

Varied study options

UC offers a range of higher qualifications in many subjects – from Accounting to Writing:

- honours degree
- graduate certificate or diploma
- postgraduate certificate or diploma
- coursework-based (“taught”) master’s degree
- research master’s degree
- conversion degrees
- doctoral programmes.

Learn more about these qualifications on [pages 11–13](#).

Flexible learning

To help you balance study with lifestyle and other commitments, UC supports flexible learning. Depending on the qualification, you could do block courses, online learning, or study part-time.



“Studying a master’s encourages me to push myself and excel. I can do outdoor work or go on research excursions. That flexibility keeps it fresh and engaging, and lets me experience a wide range of things, which is very fulfilling.”

Aaron
Master of Science in Biological Sciences



Join a connected community

Resources and facilities

- World-class facilities
- Library research resources and advice
- Some research students have access to dedicated office space and resources (contact the relevant department for details)
- Tutoring and research work opportunities
- Public lectures ([canterbury.ac.nz/ucconnect](https://www.canterbury.ac.nz/ucconnect)).

Industry connections

- Interaction with staff members increases at postgraduate level
- Applied learning experiences are available in the field, community, and businesses
- Research centres, institutions, and hubs open up opportunities.

Support systems

UC has a wealth of support services you can use:

- orientation events
- the Postgraduate Students' Association
- on-campus childcare facilities
- supportive lecturers and supervisors
- academic and advisory services

See **pages 70–71** for more information.

Alumni network

Each year 1,000+ postgraduate students complete their higher qualification at UC, joining the alumni network of over 141,000 graduates around the world. When you graduate, you automatically join the UC alumni community and can stay in touch with friends, colleagues, and know what's new at the University.

www.canterbury.ac.nz/alumni

MORE

1.9 million research items in UC's three libraries

17% of students at UC are postgraduates (approx)

100 thousand resources in UC's Māori heritage collection

717 research degrees were completed in 2022–23 (up to the time of print)



TOP 80
in the world
(Impact Rankings 2023,
Times Higher Education)

Why UC?

UC’s mantra is tangata tū, tangata orā — we want our community to be willing and prepared to make a difference — and this passion drives our University.

Art gallery to augmented reality

At UC, you have access to world-class facilities:

- the Rutherford Regional Science and Innovation Centre (RRSIC), with specialist teaching and research laboratories
- the Makerspace for creating products
- the largest structural engineering lab in Aotearoa New Zealand
- an augmented reality lab
- an art gallery
- a nanofabrication laboratory
- MARS scanner, the world’s first high-res colour 3-D x-ray
- a financial trading room
- speech and language clinics
- a moot court room
- a sports science centre
- the largest Greek and Roman antiquities collection in the Southern Hemisphere.

International achievements

QS Subject Rankings 2023

- UC is in the top 100 in the world in Civil and Structural Engineering, Geography, and Linguistics.
- UC is in the top 200 in the world in Earth and Marine Sciences, Forestry, Geology, Geophysics, and Politics.

Times Higher Education Rankings 2023

- UC is in the top 80 universities in the world for sustainability (Impact Rankings)
- UC is in the top 150 in the world in Business and Economics.

Global accreditations

- The UC MBA is accredited by AMBA, the global standard for MBAs. UC Business School is also accredited by AACSB and EQUIS; only 1% of business schools in the world have attained all three accreditations.

- Engineering programmes are accredited by Engineering New Zealand, which is a signatory to the Washington Accord.

Compact and green campus

UC has a central campus set in park-like surroundings. You can enjoy many amenities, all within minutes of each other, including 12 cafés, eateries, and bars. There is also a health centre, pharmacy, gym and recreation facilities, bookstore, postal services, and ATMs on campus.

“I was going to major in Geography and Spanish, and just took Psychology as an interesting paper. I realised that I actually really liked it! I decided to stay at UC for postgrad because I love the campus and love being at UC. It feels like home.”

Keighley
 Master of Science in Industrial and Organisational Psychology

Here's a glimpse of what the UC experience entails.



UC – top 2% of universities in the world

- research-active teaching
- 120+ qualifications to choose from
- modern facilities.



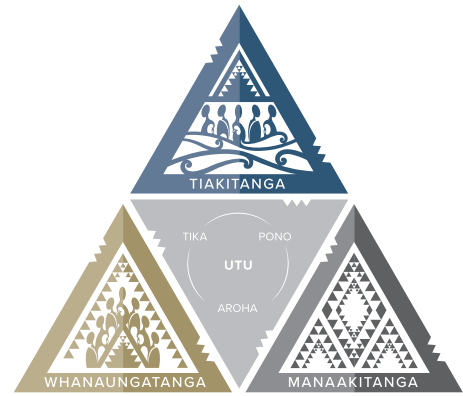
International campus

- 100+ nationalities
- 70 academics visiting yearly
- 100+ international partnerships.



Experiential learning

- field work, internships, innovative research, community engagement, sustainability, and more.



UC embraces three key values:

Whanaungatanga: He mana tō te tangata. We value people and their differences.

Tiakitanga: He kaitiaki tātou katoa. We will enhance and nurture our resources.

Manaakitanga: Kia aroha ki te tangata. We extend care and empower others.

These values have three attributes: **kia tika**, **kia pono**, and **kia aroha** — doing what is right with integrity and empathy. This is how we check in on how well we are living the values.

At the centre of our attributes is **utu** — reciprocity and balance; for every action there is a reaction.

What we do

100+

subjects available, from Antarctic Studies to Writing

UCE

UC's Centre for Entrepreneurship, business incubator and workshops

40

research centres, hubs, and institutes



5 research and field stations owned by UC in NZ and internationally (Antarctica and Nigeria)

Student experience



14% rainbow students



on campus health centre, gym & sports, pharmacy, bookstore, and postal services

160+

student clubs

12

cafés, eateries, and bars

100+

nationalities on campus



337
*Doctoral completions
 from 2022 to April 2023*

Te Kura Tāura UC Graduate School

Te Kura Tāura | UC Graduate School is a one-stop shop for doctoral and research master's information and student support needs.

We work in partnership with staff and students to create networks that foster connectivity and expand knowledge. We are here to support your academic journey by providing pastoral care, advice, and guidance throughout your studies.

We also seek to deliver research experiences through seminars and workshops that prepare students for academic and professional post-study careers and opportunities. We draw on best practices from around Aotearoa New Zealand and internationally to achieve this.

Te Kura Tāura | UC Graduate School has been created as a result of extensive consultation with our students. In this respect, much of what we see happening in the school is a direct result of the many voices of those who have studied with us. In this way, we value the knowledge and experience that our students bring.

Our values

We aspire to be a dynamic, student-centred Graduate School that embodies equity – by mentoring students to produce future-focused and relevant research that enhances not only their knowledge and discipline, but also our communities.

Whanaungatanga

We welcome a plurality of students whose diverse backgrounds strengthen UC and bring us closer.

Tiakitanga

We encourage research that contributes positively to our community and environment.

Manaakitanga

We provide support to students and staff that values their strengths and empowers them on their research journey.

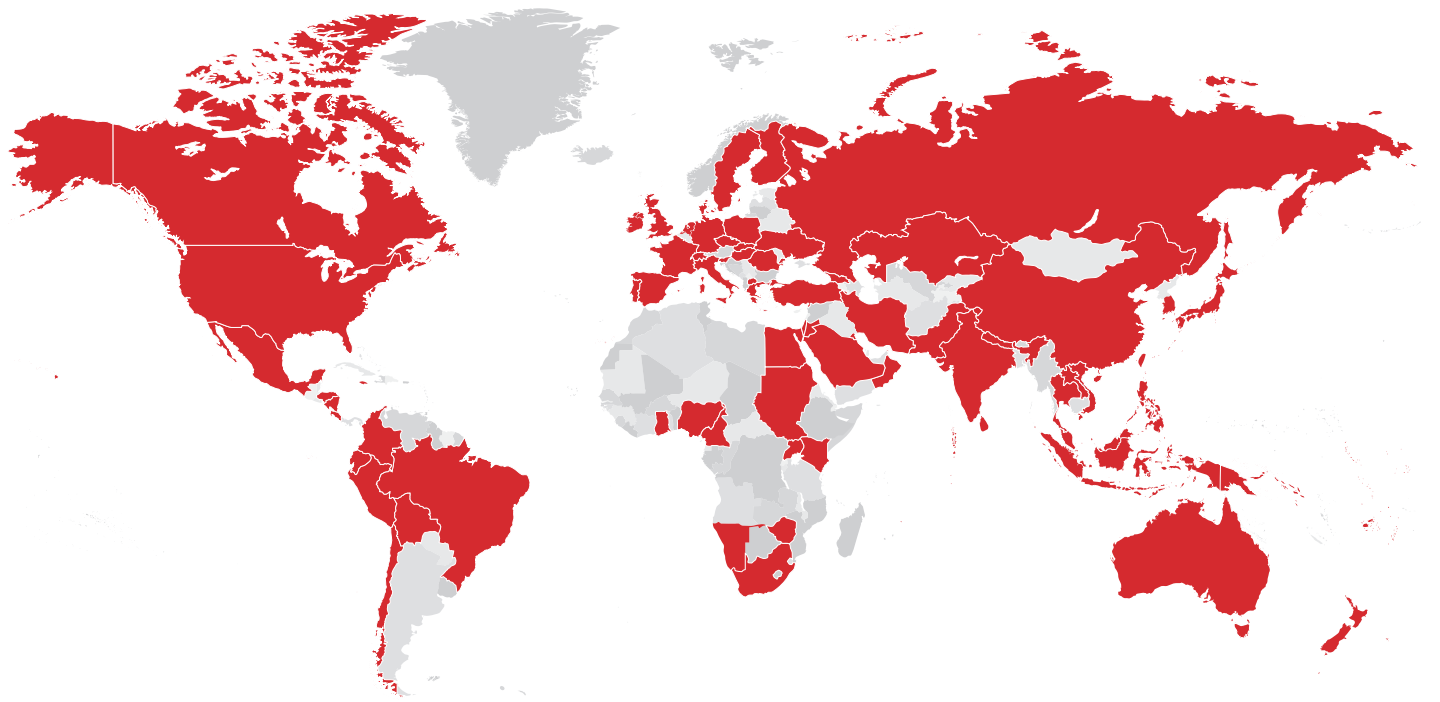


“The environment at UC is very supportive. I’ve got such good relationships with everyone from the department lecturers and advisors through to the admin staff, I wanted to finish my linguistics study journey here.”

Sidney

Master of Linguistics, Master of Applied Data Science, PhD in Linguistics

UC postgraduates come from all over the world



Researcher development

Pursuing graduate research is not just about undertaking a significant academic research project and writing a thesis, it is a journey during which students develop as researchers and prepare for future careers.

The Researcher Development team at Te Kura Tāura | UC Graduate School accompanies graduate research students on this journey by offering dedicated support. The team works closely with experts across the University to create a Researcher Development Framework that students can use to structure their development and navigate their research journey at UC. It will consist of training and development opportunities tailored to each stage of a student's candidature.

Furthermore, the team acts as first point of contact for students, supervisors and other UC staff supporting research students. Two dedicated Kaitoko | Research Student Advisors facilitate students' transition into UC, as well as accompany students on their research journey by offering regular one-on-one support.



Conducting graduate research is an exciting, but also challenging endeavour. As such, the team has a strong focus on supporting student wellbeing. The Kaitohutohu Oranga | Lead Advisor — Wellbeing works with the Te Kura Tāura team and colleagues across the university to establish processes and practices that boost research student wellbeing.

Te Kura Tāura | UC Graduate School
www.canterbury.ac.nz/graduate-school



\$236m
\$236 million in active research contracts at UC

Rangahau | Research

UC is an important research university in Australasia, and our academic staff regularly collaborate with many researchers, business, and community groups.

Accessible experts

To explore the range of our research areas, search the database of UC's current researchers and research projects:

<https://researchprofile.canterbury.ac.nz>

You can also read about some of our projects, partnerships, and groundbreaking findings at www.canterbury.ac.nz/research

The UC Research Repository is an open-access database of original research by Waitaha Canterbury academics, researchers, and postgraduate students.

<https://ir.canterbury.ac.nz>

Research-informed teaching

Our programmes are research-led, with academic staff who actively research and publish in their specialist areas. Lecturers and researchers regularly receive international and national awards for their work.

Teaching and supervision up to PhD level is available in most subjects.

International experts in various fields — the sciences, applied gaming, immersive technologies, business, and many more — work with postgraduate students in labs, and may also teach in our faculties. You can also learn from international academics from top universities, hosted at UC through our Erskine Programme.

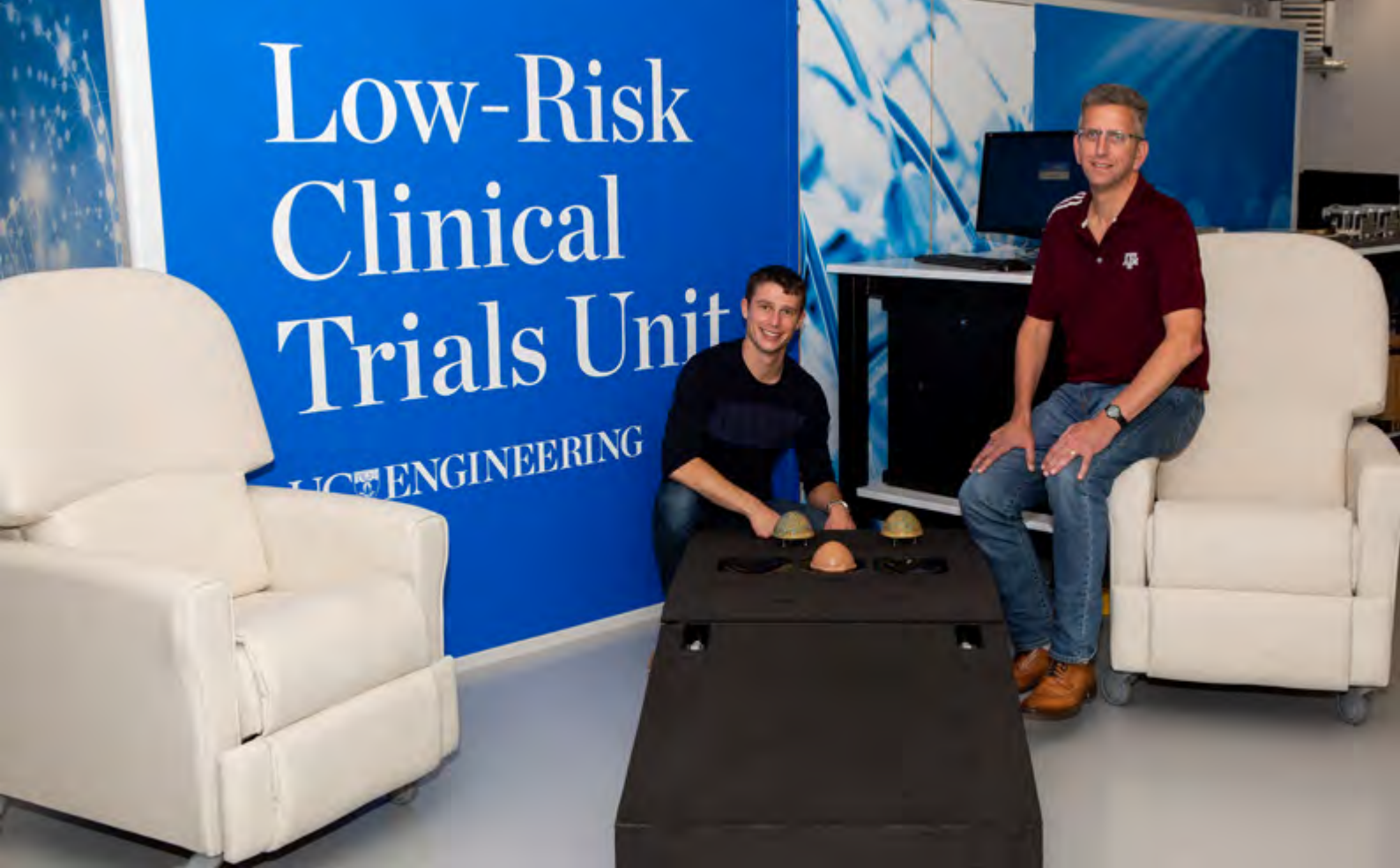
UC researchers play lead roles in many of the eleven National Science Challenges and the ten Centres of Research Excellence funded by government.

Exceptional resources

Te Puna Mātauraka o Te Whare Wānanga o Waitaha | UC Library is accessible online 24/7, and has a research collection of over 1.9 million items and access to more than 45,000 periodicals. Specialist subject librarians provide support across all disciplines.

UC's three libraries house specialist collections including:

- Te Puna Mātauraka o Te Whare Wānanga o Waitaha | UC Library with all kinds of subject material. Specialist collections include Antarctica, De Jong (Asian religions and history, especially Hinduism and Buddhism), European Union, and New Zealand government publications.
- Te Puna Pūkaha me te Pūtaiao | Engineering and Physical Sciences (EPS) Library (engineering, forestry, physics and astronomy, chemistry, computer science, biological and geological sciences, and mathematics and statistics).
- Te Puna Rakahau o Macmillan Brown Macmillan Brown Library holds Aotearoa and Pacific Islands material, including a collection of about 100,000 books, journals, artefacts, and drawings.



Leading centres and institutes

UC is home to 40 research centres, institutes, and hubs. The centres attract and retain high-calibre academic staff, gain media interest, and offer exciting research and work opportunities at postgraduate level. Here are a few examples:

- Te Hiranga Rū | Quake CoRE: New Zealand Centre for Earthquake Resilience www.quakecore.nz
- Biomolecular Interaction Centre www.canterbury.ac.nz/bic
- Te Kāhui Roro Reo | New Zealand Institute of Language, Brain and Behaviour (NZILBB) www.canterbury.ac.nz/nzilbb
- Toi Hangarau | Geospatial Research Institute (GRI) www.geospatial.ac.nz
- Macmillan Brown Centre for Pacific Studies www.canterbury.ac.nz/mbc
- National Centre for Research on Europe (NCRE) www.canterbury.ac.nz/ncre
- Kā Waimaero | Ngāi Tahu Centre www.canterbury.ac.nz/ntrc
- Spatial Engineering Research Centre www.canterbury.ac.nz/serc
- Wireless Research Centre www.canterbury.ac.nz/wrc
- Electric Power Engineering Centre (EPECentre) www.canterbury.ac.nz/epecentre
- Gateway Antarctica www.canterbury.ac.nz/science/schools/earth-and-environment/antarctica

- Centre for Bioengineering www.canterbury.ac.nz/engineering/schools/mechanical/research/bioengineering
 - Te Taiwhenua o te Hauora | GeoHealth Laboratory www.canterbury.ac.nz/science/research/geohealth
 - Hangarau Tangata, Tangata Hangarau Human Interface Technology Laboratory of New Zealand (HIT Lab NZ) www.hitlabnz.org
 - New Zealand Centre for Human-Animal Studies www.canterbury.ac.nz/nzchas
 - Te Puna Whakaora Rehu Ohotata Rose Centre for Stroke Recovery and Research www.canterbury.ac.nz/rosecentre
 - The Waterways Centre www.waterways.ac.nz
- www.canterbury.ac.nz/research/about-uc-research/research-groups-and-centres

Partner organisations

UC is a major partner organisation of the MacDiarmid Institute for Advanced Materials and Nanotechnology, the New Zealand ICT Innovation Institute (NZi3), and the Waterways Centre.

UC research

www.canterbury.ac.nz/research



“I met a researcher through UC who needed help collecting rock samples at Mount Cook. For four days we travelled by helicopter up and down the Murchison Glacier, landing to collect samples. That trip has been a real highlight of my time at UC.”

Yusuf
PhD in Physics

Study options



Study pathways

Honours degrees

An honours degree allows you to specialise in the subject you are passionate about, for example the Bachelor of Science with Honours in Biochemistry. It involves a year of full-time coursework and will include a research component.

Honours degrees are like a taster to further study, and if you complete one to a satisfactory standard then you may choose to progress to a master's degree or doctoral studies.

Graduate certificates and diplomas

Graduate studies typically involve taking advanced undergraduate courses. Most graduate qualifications can be taken in a new area for a change of subject focus from your bachelor's. This can enhance the value of your undergraduate degree, be a first step to a new career, or further your study.

Some graduate qualifications, like the Graduate Diploma in Teaching and Learning, are professional qualifications that prepare you for a specific career.

Some graduate certificates can be completed in six months of full-time study, while graduate diplomas can typically be completed in a year of full-time study.

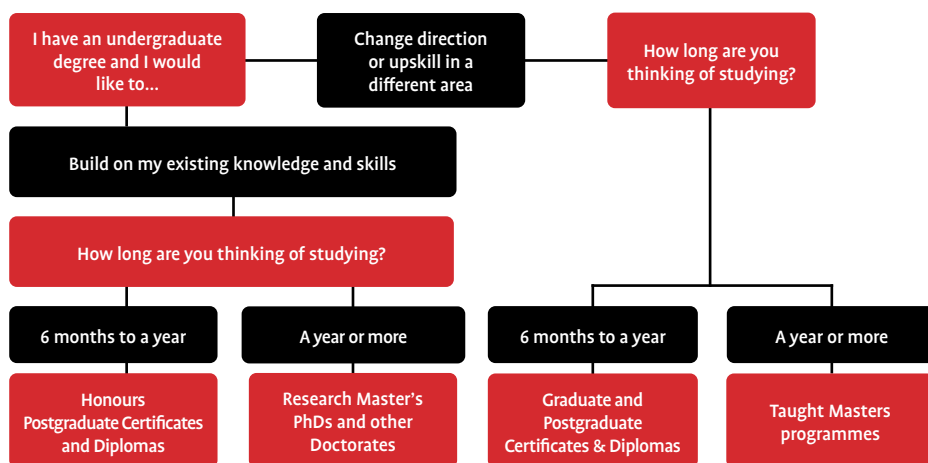
Postgraduate certificates and diplomas

These qualifications develop a higher level of understanding and specialist skills in the area of your interest. Professional experience may be counted for entry into study.

Postgraduate certificates can offer a specialised professional development opportunity and often be completed in six months of full-time study (or up to two years part-time). They can also be a good first step towards higher study. For example, the Postgraduate Certificate in Te Reo Māori is an ideal option for those who have work experience in the Māori sector and want to advance their language skills.

Postgraduate diplomas are longer and more in-depth than postgraduate certificates, and similarly aimed at those looking for professional development and/or considering more advanced study. For example, the Postgraduate Diploma in Clinical Psychology or Postgraduate Diploma in Child and Family Psychology is a great way to advance in the area of your professional interest.

A basic depiction of graduate and postgraduate pathways



Note: We also have part-time study options available, which will take longer to complete. Some degrees may accept enrolments based on relevant work experience and do not require previous university study. For study planning advice, please contact a Student Advisor.

As well as offering structured courses, many postgraduate diplomas allow you to undertake an independent project or research. They can typically be completed in one year full-time, or part-time up to two years. For example, a full-time Postgraduate Diploma in Clinical Psychology consists of two years of coursework and one year of clinical experience.

Conversion certificates and diplomas

Conversion qualifications allow you to move from one subject area into another and grow new skills. Some conversion certificates and diplomas are open to anyone with a bachelor's degree. For example, if you're interested in Criminal Justice but have studied something completely different, you can take the Graduate Diploma in Criminal Justice.

Some conversion qualifications require a bit of background study before you can move onto exploring something new. For example, if you'd like to study a Postgraduate Certificate in Sport Science, you would need to have done a degree in a sport or science-related subject such as the Bachelor of Science or Bachelor of Sport Coaching.

See pages 63-64 for a list of conversation qualifications available at UC.

Research master's

A research master's degree advances your knowledge and enables you to conduct a significant piece of independent research (with supervision). If you are intending to conduct research, you should investigate potential supervisors before applying to study at UC. See the searchable database of current researchers at <https://researchprofile.canterbury.ac.nz>. Please check their availability or eligibility to act as supervisors.

Coursework (taught) master's

A taught master's degree provides a structured programme of courses at an advanced level. There will be many applied learning opportunities such as an independent project or industry placement as part of the degree. A number of UC's master's programmes allow for a combination of both coursework and research.

Conversion master's

In some cases, you can study a different subject from that of your prior degree, opening up new learning experiences and career pathways for your future. For example, Master of Applied Data Science is a conversion master's designed to accommodate students from a range of backgrounds (not just those with Mathematics, Statistics, or Computer Science backgrounds).

See pages 63-64 for a list of conversation qualifications available at UC.



Professional development options

There are many options available at UC for professional development and keeping up-to-date with technologies and developments in the industry you work in.

Some offerings at UC include:

- Whakangungu Ngaioatanga | UC Executive Education — UC Business School runs short courses and bespoke programmes. Learn more on [page 65](#).
- Tuihono UC | UC Online — short courses, microcredentials, master's degrees can be studied online while you work. Learn more on [pages 66–67](#).
- Engineering professional development — see [page 32](#) to learn more.
- Teaching professional development — see [pages 24–30](#) to learn more.
- Postgraduate certificates and diplomas to learn new skills — see [pages 14–62](#) for a full list of options available at UC.

Doctoral studies

UC offers two types of doctoral programmes:

- Doctor of Philosophy (PhD)
- Professional Doctoral degrees: Doctor of Musical Arts (DMA), Doctor of Education (EdD), and Doctor of Health Sciences (DHSc).

Doctor of Philosophy (PhD)

UC PhD is a research-only degree carried out under expert supervision with world-class facilities. At UC, you can complete a PhD in over 80 subjects, joining over 1,000 ākonga (students) from 60 different nations.

A PhD involves extensive, sustained, and original research in your chosen subject, with the results being presented in a thesis that will contribute to knowledge of the field. It requires self-discipline and commitment, and prepares you for a number of careers, including academia.

In addition to expert supervision, UC gives all doctoral students opportunities to gain transferable skills including communication of research, networking, career planning, statistical analysis, ethics, professional practice, and cultural awareness.

The minimum period of enrolment for a full-time PhD student is three years; most will take between three to four years.

International students

While completing a PhD in Aotearoa you and your whānau are eligible for a number of benefits, including:

- domestic fee rates
- open work visa for partners (Partner of a Student Work visa)
- the opportunity to apply for a three-year work visa on PhD completion (Post Study Work visa)
- the ability to enrol your children as domestic students in Aotearoa New Zealand schools.

NOTE: For current conditions, check Immigration New Zealand's website at www.immigration.govt.nz

Applying for a PhD

Students who wish to do a PhD need a research-focused honours or master's degree at first-class or second-class division 1 level (or equivalent qualifications). Intending PhD students must contact and have agreement from a potential supervisor before applying.

Information about the research interests of academic staff (supervisors) can be found on the relevant department website or the UC Research Profile. Please check their availability or eligibility as supervisors.

<https://researchprofile.canterbury.ac.nz>

Applications will not be approved until a ZOOM/Skype interview has taken place.

Doctor of Musical Arts (DMA)

The Doctor of Musical Arts allows students to undertake advanced research in music composition or performance. It involves scholarly research in the form of a supervised research thesis, and practice in the form of public music performance or the presentation of compositions.

The application process usually requires an audition, interview, and/or submission of previous academic work with a recommendation from Te Kura Puoro | School of Music. For more information, see [page 49](#).

Doctor of Education (EdD)

The Doctor of Education is a specialised doctorate designed for professionals in Education and related fields. The EdD builds leadership and commitment, fosters scholarly excellence, and allows students to connect educational research with questions of professional practice, especially leadership.

Part I of the EdD consists of a research portfolio and is completed part-time over two years, then followed by a thesis as Part II, which can be completed full-time over 2 years or part-time over 4 years. For more information, see [page 29](#).

Doctor of Health Sciences (DHSc)

The Doctor of Health Sciences is a specialised doctorate designed for health professionals and those working in related fields. It involves using health data and research to inform, develop, and potentially change professional practice and health systems, and improve health outcomes of individuals, whānau, and communities. Part I of the DHSc consists of a research portfolio and is completed part-time over two years. Part II consists of a thesis, which can be completed full-time over 2 years or part-time over 4 years. For more information, see [page 45](#).

For more information on UC's doctoral programmes, go to www.canterbury.ac.nz/graduate-school/prospective-students

Frequently asked questions

What are the entry requirements for postgraduate studies?

We have a wide range of qualifications to meet all kinds of your requirements — whether you are wanting to gain expertise in a subject area, do professional development, change direction, or want to study after having gained work experience.

Most require a bachelor's degree, or work experience; go to [pages 14–62](#) for a full list of qualifications with their respective entry requirements, or check the website.

How long will my study take?

Qualifications vary in length — graduate and postgraduate certificates can be completed in six months of full-time study; a full-time master's will take at least a year; and a PhD is typically completed in three to four years of full-time study.

www.canterbury.ac.nz/courses

Do you offer flexible arrangements?

Part-time study

Many qualifications can be studied part-time, but this may require approval — the criteria considered include employment, immigration status, health, and family circumstances.

Studying by distance

Although most programmes are taught on campus, a few can be studied by distance. Course material is provided online and students participate in lectures through an interactive learning platform.

This is possible in some Teaching degrees. You will have to be on campus for a block session at least once during your study. However, the Master of Teaching English to Speakers of Other Languages and the Master of Education can be studied wholly online. Please contact Te Kaupeka Ako | Faculty of Education for advice.

www.canterbury.ac.nz/education

Online learning

UC Online has a range of online courses to help you expand your learning and professional toolkit that will fit into your busy lives. Learn more on [pages 66–67](#).

www.uonline.ac.nz

Can I study just one course?

You may enrol in a single course. However, entry is based on the idea that you are enrolling without intending to credit it to a degree. Upon completion and with approval, you can gain a Certificate of Proficiency for that course.

UC offers short courses for professionals — see [pages 24–28](#) for teaching courses, [page 65](#) for business courses, [page 32](#) for engineering, and [pages 66–67](#) for UC Online courses.

Unsure or need advice?

Speak to a student advisor.

www.canterbury.ac.nz/support/advisors/postgraduate

See all study options on [pages 14–62](#).

www.canterbury.ac.nz/graduate-school
www.canterbury.ac.nz/research

Toi Tangata | Arts



UC Arts has research-driven teaching, and study options in over 40 subjects.

Postgraduate students benefit from many resources including:

- the James Logie Memorial Collection – the Southern Hemisphere’s foremost collection of Greek and Roman antiquities
- Te Puna Rakahau o Macmillan Brown Macmillan Brown Library – a collection of Aotearoa and Pacific Islands materials
- internationally renowned research centres
- the American and Canadian fiche collection
- the UC Art Collection
- audio-visual equipment, field stations, and language teaching laboratories.

UC is ranked among the world’s top 100 in Linguistics; top 200 in Political Science; and top 250 for Media and Communication (QS World University Rankings by Subject, 2023).

There are internship opportunities for postgraduate students through our course PACE495 Professional and Community Engagement Internship.

Research

Research is integral to our teaching and academics are engaged in fundamental and applied research across a broad range of subjects at regional, national, and international levels.

The Faculty hosts a number of successful research centres:

Te Kāhui Roro Reo | New Zealand Institute of Language, Brain and Behaviour (NZILBB)

Dedicated to the study of human language, this multidisciplinary centre covers linguistics, speech production and perception, language acquisition and disorders, memory, brain imaging, and bilingual education.

www.canterbury.ac.nz/nzilbb

UC CEISMIC Canterbury Earthquake Digital Archive

Following the earthquakes of 2010/11, the UC CEISMIC Digital Archive has been collecting and preserving the memories and experiences of the people of the Waitaha Canterbury region.

www.ceismic.org.nz

National Centre for Research on Europe (NCRE)

The NCRE is the only interdisciplinary research body in Aotearoa devoted to examining the impact of the European Union in our region.

Some current research themes being covered include political and security issues, economic and trade relations, culture and migration, climate change, and energy.

www.canterbury.ac.nz/ncre

Other centres hosted by UC are:

- Confucius Institute
- Hei Puāwaitanga: Sustainability, Citizenship and Civic Imagination Research Group
- Macmillan Brown Centre for Pacific Studies
- New Zealand Centre for Human-Animal Studies
- New Zealand South Asia Centre
- Kā Waimaero | Ngāi Tahu Centre.

See **pages 8–9** for more information.

Career opportunities

The ability to think independently and critically, write, analyse, research, problem-solve, innovate, and communicate are vital skills taught as part of an Arts degree.

Graduates receive a respected, internationally recognised qualification that lays the foundation for a successful career, be it in media, government, international relations, culture, heritage, archives, public policy, research, communications, conservation, education, community development, publishing, design, business, marketing, or academia.

www.canterbury.ac.nz/careers

Subject areas

Subject	Honours	Master's (coursework)	Master's (thesis)	PhD	PG Cert/Dip	Grad Cert/Dip
Anthropology	•	•	•	•	•	•
Applied Translation and Interpreting		•			•	
Art Curatorship					•	
Art History and Theory	•	•	•	•	•	•
Child and Family Psychology			•			
Chinese	•	•	•	•	•	•
Cinema Studies						•
Classics	•	•	•	•	•	•
Creative Practice				•		
Cultural Studies	•	•	•	•	•	•
Digital Humanities		•			•	
Economics	•	•	•	•	•	
Education	•	•	•	•	•	•
English	•	•	•	•	•	•
European Studies	•	•	•	•	•	•
French	•	•	•	•	•	•
Geography	•	•	•	•	•	•
German	•	•	•	•	•	•
History	•	•	•	•	•	•
Human-Animal Studies				•		
Human Services	•	•	•	•	•	•
International Relations and Diplomacy		•				
Japanese	•	•	•	•	•	•
Journalism				•		•
Linguistics	•	•	•	•	•	•
Māori and Indigenous Studies/Leadership	•	•	•	•	•	•
Mathematics	•		•	•	•	•
Media and Communication/Strategic Communication	•	•	•	•	•	•
Music	•	•	•	•	•	•
Pacific Studies			•	•		
Philosophy	•	•	•	•	•	•
Policy and Governance		•				
Political Science and International Relations	•	•	•	•	•	•
Psychology	•	•	•	•	•	•
Russian	•	•	•	•	•	•
Sociology	•	•	•	•	•	•
Spanish	•	•	•	•	•	•
Statistics	•		•	•	•	•
Te Reo Māori	•	•	•	•	•	•
Writing		•				

Graduate and postgraduate programmes

Qualification	Description	Requires	Start date	Duration
Bachelor of Arts with Honours <i>BA(Hons)</i>	The BA(Hons) is for high-achieving Bachelor of Arts students (or equivalent). Students can complete their own research as well as taught electives. For the range of subjects, see page 15 .	Relevant BA or any bachelor's degree in relevant discipline, or relevant graduate diploma.	February or July*	Full-time: 1 year Part-time: up to 2 years
Graduate Diploma in Arts <i>GradDipArts</i>	Offers people who already hold a bachelor's degree an opportunity to study Arts in-depth. Designed for graduates seeking to qualify for entry to postgraduate qualifications in Arts, or to extend or upgrade their existing qualifications. For the range of subjects, see page 15 .	Must have qualified for a university degree.	February or July*	Full-time: 1 year Part-time: up to 5 years
Graduate Diploma in Journalism <i>GradDipJour</i>	This diploma gives students the knowledge, skills, and competencies needed to be effective journalists. They receive intensive training on media ethics and law, news gathering and writing, research and analysis, and multimedia skills.	BA or other qualification of an equivalent standard.	February (full-time)	Full-time: 1 year
Graduate Diploma in Strategic Communication <i>GradDipStratComm</i>	This is an ideal option for those wanting to add professional communication skills to their current studies or career, or for those looking to change direction towards corporate or creative media work.	BA or other qualification of an equivalent standard.	February or July	Full-time: 1 year Part-time: up to 5 years
Postgraduate Certificate in Arts <i>PGCertArts</i>	Further study (60 points) in one area of specialisation. Can be undertaken part-time. For the range of subjects, see page 15 .	BA or an equivalent degree with grades to a specified level.	February or July*	Full-time: 6 months** Part-time: 1 year
Postgraduate Certificate in Digital Humanities <i>PGCertDigi</i>	Employers are eager for 'work-ready' graduates who can use digital tools, translate complex information, manage projects, and collaborate within interdisciplinary teams. Develop a critical understanding of the variety of digital tools and methods for research, teaching, and employment.	BA or any bachelor's degree plus relevant graduate diploma.	February or July	Full-time: 6 months** Part-time: 1 year
Postgraduate Certificate in Māori and Indigenous Leadership <i>PGCertMIL</i>	This Certificate aims to engage students in critical analysis of models of indigenous development, preparing students for further study in the area.	Bachelor's degree with grades to a specified level and relevant professional experience. A portfolio and interview is required.	February	Part-time: 1 year
Postgraduate Certificate in Te Reo Māori <i>PGCertTReo</i>	This Certificate provides a pathway for students without an undergraduate degree, but who have a high level of te reo Māori, into postgraduate Te Reo Māori studies. The Certificate leads into the Postgraduate Diploma in Te Reo Māori, and subsequently Master of Te Reo Māori.	Bachelor's degree with grades to a specified level and/or relevant professional experience. A portfolio and interview is required.	February or July*	Full-time: 6 months Part-time: 1 year
Postgraduate Certificate in Translation and Interpreting <i>PGCertT&I</i>	You will receive professional certification in either translation or interpretation in a wide variety of languages. With successful completion of this degree, you will meet the requirements to apply for certification with the National Accreditation Authority for Translators and Interpreters (NAATI).	Bachelor's degree with grades to a specified level in Chinese, French, German, Japanese, Russian, Spanish, or Te Reo Māori or other approved languages, or relevant professional experience in these languages.	February	Full-time: 6 months
Postgraduate Diploma in Art Curatorship <i>PGDipArtCuratorship</i>	This Diploma consists of four courses including 'The Art Museum Past and Present', a special project in staging an exhibition, a gallery internship, and one course from the Art History honours schedule.	BA, BFA, or degree with relevant professional experience.	February or July*	Full-time: 1 year Part-time: 2 years

* July start subject to course availability.

Qualification	Description	Requires	Start date	Duration
Postgraduate Diploma in Arts <i>PGDipArts</i>	This Diploma is ideal for graduates wishing to undertake advanced study in a humanities or social science specialisation. Students can choose between a number of course combinations, and it offers a convenient taught pathway to other postgraduate study opportunities.	BA or an equivalent degree with grades to a specified level.	February or July*	Full-time: 1 year Part-time: up to 2 years
Postgraduate Diploma in Te Reo Māori <i>PGDipTeReo</i>	An introduction to research-based knowledge, emphasising linguistic competence and critical thinking about a number of contemporary aspects of te reo Māori. Students who complete the Diploma with Merit or Distinction may transfer to the Master's.	Bachelor's degree in Te Reo Māori or equivalent, or bachelor's degree and relevant professional experience and fluency in te reo Māori.	February or July*	Full-time: 1 year Part-time: up to 4 years
Postgraduate Diploma in Translation and Interpreting <i>PGDipT&I</i>	Develop your language expertise into a career as either a translator or interpreter. With successful completion of this degree, you will meet the requirements to apply for certification with the National Accreditation Authority for Translators and Interpreters (NAATI).	Bachelor's degree with grades to a specified level in Chinese, French, German, Japanese, Russian, Spanish, or Te Reo Māori or other approved languages, or relevant professional experience in these languages.	February or July	Full-time: 1 year Part-time: up to 2 years
Master of Arts <i>MA</i>	A 180-point Master of Arts degree by coursework and dissertation. Prerequisites vary between programmes, but normally good grades in 300-level courses in the subject concerned are required. For the range of subjects, see page 15 .	Bachelor's degree in an approved subject with grades to a specified level.	February or July	Full-time: 18 months Part-time: up to 3 years
Master of Arts (Thesis) <i>MA(Thesis)</i>	The Master of Arts (Thesis) degree consists of a 120-point thesis in a chosen subject. Prerequisites vary between programmes. For the range of subjects, see page 15 .	BA(Hons) in the chosen subject with a B+ Grade Point Average. Child and Family Psychology requires 150 points of coursework and a 120-point thesis.	February or July	Full-time: 2 years Part-time: up to 4 years
Master of Applied Translation and Interpretation <i>MATI</i>	The MATI gives students advanced language, cultural, and communication skills to work as professional interpreters and translators.	A degree with at least 60 points at 300-level with at least a B+ Grade Point Average in either Chinese, French, German, Japanese, Russian, Spanish, or Te Reo Māori, or other approved language; or a <i>PGCertT&I</i> or <i>PGDipT&I</i> with at least a B Grade Point Average.	February	Full-time: 12–18 months
Master of European Union Studies <i>MEuro</i>	This degree is unique in Australasia and benefits from UC's National Centre for Research on Europe. It looks at the European Union in the global context, with special focus on the Asia-Pacific region and EU–NZ relations.	BA degree in a relevant subject or relevant bachelor's degree plus qualifying course.	February or July*	Full-time: 12–18 months Part-time: 2–3 years
Master of International Relations and Diplomacy <i>MIRAD</i>	The MIRAD is perfect for students interested in careers in foreign affairs or inter-state coordination.	Bachelor's degree with grades to a specified level (or equivalent), or bachelor's degree and relevant professional experience.	February	Full-time: 12–18 months Part-time: up to 3 years

* July start subject to course availability.

Qualification	Description	Requires	Start date	Duration
Master of Linguistics <i>MLing</i>	Offers specialist courses in linguistic analysis as well as a significant research component. Graduates will gain a special awareness and appreciation of the linguistic situation in Aotearoa and the Pacific.	An undergraduate degree in Linguistics, or a relevant undergraduate degree and completion of a qualifying course via distance learning (LING400).	February	Full-time: 1 year Part-time: up to 2–3 years
Master of Māori and Indigenous Leadership <i>MMIL</i>	Aims to equip the next generation of leaders across a variety of sectors with the skills, knowledge, and attributes to advance the aspirations of iwi Māori and other indigenous peoples.	Bachelor's degree with grades to a specified level and relevant professional experience, or the PGCertMIL. A portfolio and interview is required. Applications are due 30 November .	February	Full-time: 12–18 months Part-time: up to 2–3 years
Master of Policy and Governance <i>MPAG</i>	A professional capstone qualification in policy analysis and strategic decision making, this master's will provide advanced interdisciplinary training in one year for those wishing to progress in local, regional, national, and third sector/not-for-profit roles.	A Bachelor's or equivalent degree in any subject, with at least a B grade average.	February	Full-time: 12–18 months Part-time: up to 3 years
Master of Strategic Communication <i>MStratCom</i>	This taught master's degree will allow you to develop your critical understanding of communication in a complex media environment. Learn skills in media writing, analytics, and research methods used in the workplace. Note: international students require an IELTS average score of 7 (or equivalent).	Bachelor's degree with at least a B grade average at 300-level, or any degree plus relevant work experience.	February	Full-time: 1 year Part-time: up to 3 years
Master of Te Reo Māori <i>MTeReo</i>	The MTeReo provides advanced knowledge of the language and an introduction to research, emphasising linguistic competence and critical thinking about a range of contemporary and historical aspects of te reo Māori.	Bachelor's degree in Te Reo Māori or equivalent; or bachelor's degree and relevant professional experience and high level of competency in te reo.	February or July	Full-time: 2 years Part-time: up to 4 years
Master of Writing <i>MWRIT</i>	The MWRIT offers a thorough grounding in the skills common to all genres of writing – creative, professional, technical, and academic – while also allowing you to deepen your knowledge and ability in one or more genre.	Bachelor's degree with at least a B grade average at 300-level, or any degree plus relevant work experience.	February or July*	Full-time 12–18 months Part-time: 2–3 years
Doctor of Philosophy <i>PhD</i>	For more information on PhDs, see page 12 . For the list of available subjects, see page 15 .	Bachelor's degree with first or second-class honours division 1, or master's degree with distinction, or merit, or equivalent.	Beginning of any month†	Full-time: 3–4 years Part-time: 4.5–6 years

* July start subject to course availability.

† December and January starts are not recommended.

Contact us

Te Kaupeka Toi Tangata | Faculty of Arts

T: +64 3 369 3377

E: artsdegreeadvice@canterbury.ac.nz

www.canterbury.ac.nz/arts

Umanga | Business



At Te Kura Umanga UC Business School, our innovative, research-based qualifications prepare you for a successful professional career.

We offer taught master's programmes that will equip you with the applied skills and knowledge you need to move into high-level business roles. Coursework-based degrees in a range of subjects like applied economics and finance, marketing, professional accounting, and business information systems, provide an intensive learning experience covering the essential operational functions of any organisation.

Leading change

Our world-class business education encourages you to engage in projects that are impactful and affect organisational change. The School is renowned for producing graduates who

show leadership and can create viable business solutions. You'll find our graduates working in organisations that contribute to the economy and wellbeing of their communities.

Our programmes are internationally accredited by the Association to Advance Collegiate Schools of Business (AACSB) and the EFMD Quality Improvement System (EQUIS). The MBA programme is also accredited by the Association of MBAs (AMBA). This places Te Kura Umanga | UC Business School in the top 1% of Business Schools worldwide holding all three accreditations collectively known as the 'Triple-Crown'.

Industry and partnerships

Te Kura Umanga | UC Business School has links with industry which will enable you to attend guest lectures and presentations by business leaders, innovators, and entrepreneurs. Taught master's programmes can include a project or internship with a business or nonprofit organisation. The School has the opportunity to host 15 scholars annually from top international universities through UC's Erskine programme.

Innovation and entrepreneurship

In today's business environment, innovation and entrepreneurship are key drivers for organisational growth and sustainability. Postgraduate study encourages you to analyse current viewpoints while considering future business applications in new and progressive ways.

You can gain practical business experience with Te Pokapū Rakahinonga | UC Centre for Entrepreneurship (UCE). UCE aims to develop and support young entrepreneurs by hosting student-run societies such as *entré* and 180 Degrees Consulting. You can network and learn valuable skills, develop sustainable solutions for charities and nonprofits under the guidance of industry mentors, and more. The UC Incubator and Summer Start-up programmes can help you to start your own business venture with support, resources, and events such as business bootcamps.

www.canterbury.ac.nz/business/uce



Research degrees

Our academics conduct, publish, present, and collaborate on research with global relevance and application. This research then informs what they go on to teach. Our academics are highly respected in their fields, attracting research students from around the world. Examples of research being done by our academics include:

- major public policy issues, such as social and environmental accounting and reporting
- sustainable business development
- sustainable and resilient tourism
- tax compliance
- financial risk management.

Postgraduate research students complete a combination of coursework and a thesis or dissertation that involves literature reviews, data collection and analysis, and expanding the current concepts and knowledge in your chosen area.

Our research programmes are available for graduates who wish to further develop specialisation in their chosen field. Our postgraduate students benefit from good supervision ratios, a focus on quality research, smaller classes and closer links with staff.

Featured Research

Tourism research is a distinct area of expertise. It is informed by collaborative projects with local, national, and international government bodies and nonprofit organisations, such as ChristchurchNZ, the local economic development agency for Waitaha Canterbury. At the national level, we are involved in projects with Tourism Industry Aotearoa (TIA), the only independent association that represents all sectors of New Zealand's tourism industry. For example, UC researchers and students were involved in mapping tourism data sources within Aotearoa on behalf of TIA. Tourism researchers were also involved in workshops run by MBIE on the tourism data domain for Aotearoa.

Career opportunities

Postgraduate business study can lead to an academic career, provide professional development or serve as a transition to a new career. Te Kura Umanga | UC Business graduates are prepared for professional roles in every kind of organisation where people need to be innovative, solve challenging problems, and make a difference.

www.canterbury.ac.nz/careers

Degree options

Te Kura Umanga | UC Business School has a range of qualifications to prepare you for the dynamic business sector — whether that's upskilling, starting your own business, or learning something entirely new.

Conversion degrees

A conversion degree allows you to study a different field to your undergraduate degree. No prior experience in the field is required. Options are listed below with more details on [pages 22-23](#).

- Postgraduate Certificate in Business
- Postgraduate Diploma in Business
- Postgraduate Diploma in Business Information Systems
- Master of Business
- Master of Business Information Systems
- Master of Professional Accounting.

Professional master's

The Master of Professional Accounting (MPA) and Master of Applied Economics and Finance (MAFE) are our professional masters preparing you for examinations and membership of professional bodies.

The MAFE is a taught master's qualification that offers a pathway into high-level professional roles for graduates with background knowledge in microeconomics, business finance, and introductory calculus and statistics. The qualification is aligned with requirements for the CFA Institute examination.

You can move to an accounting career from a different field with our MPA, a conversion degree that is also a professional degree. The MPA prepares you for membership of chartered and certified accountancy bodies such as CA ANZ, CPA Australia, and ACCA.

Master of Business Administration (MBA)

The UC MBA programme is ideal for experienced professionals who want to accelerate their careers, change industry, or upskill in their current roles with the aim to achieve impact in an environment of change and disruption.

Through courses focused on innovation, digital transformation, data-informed strategy making, and responsible societal engagement, you will be equipped to tackle the challenges of a rapidly changing world and become a well-rounded leader.

While MBA students are typically middle to senior-level professionals from organisations of any size or sector, business start-ups and entrepreneurs looking to scale their ventures will also benefit from the programme as we have close ties with the UC Centre for Entrepreneurship (UCE).

We also have a large cohort of candidates from professional careers (e.g. pilots, engineers, medical professionals) who enter our MBA through the Postgraduate Diploma in Business Administration pathway if they do not have undergraduate degree.

canterbury.ac.nz/business/mba

Scholarships

If you're studying towards a Master of Commerce or PhD then you can apply for either a UC Master's Scholarship or UC Doctoral Scholarship.

The Ben Gough Family Foundation Leaders Scholarship supports rising talent to undertake their MBA.

Te Kura Umanga | UC Business School

T: +64 3 369 3888

E: postgradbusiness@canterbury.ac.nz

www.canterbury.ac.nz/business

Subject areas

Subject	Honours	Master's	PhD	PG Cert/Dip	Grad Cert/Dip
Accounting	•	•	•		•
Applied Finance and Economics		•			
Business Administration		•		•	
Business		•		•	
Business Information Systems		•		•	
Economics	•	•	•		•
Finance	•	•	•		•
Financial Management		•			
Information Systems	•	•	•		•
Information Systems and Technology				•	
Management	•	•	•		•
Marketing	•	•	•		•
Professional Accounting		•			
Strategic Leadership				•	
Taxation		•	•		
Taxation and Accounting	•				



“The MBA has done so much in terms of helping me understand what it is I’m bringing to the table. If you want options, if you want opportunities — then the MBA will enable that to happen.”

Te Paea Paringatai
Master of Business Administration

Graduate and postgraduate programmes

Qualification	Description	Requires	Start date	Duration
Bachelor of Commerce with Honours <i>BCom(Hons)</i>	Further your expertise in your chosen major, and explore specialist topics that can lead to entry to master's programmes by thesis.	A relevant bachelor's degree. Students must also satisfy the course prerequisites for the subject and GPA requirements for their selected major. Generally, a B+ average in 300-level courses is required.	February or July	Full-time: 1 year Part-time: up to 4 years
Graduate Diploma in Commerce <i>GradDipCom</i>	Complete advanced commerce courses in a subject area of your interest (or explore new subjects) and transition into research-based postgraduate study.	Any bachelor's degree with a demonstrated ability to succeed in 300-level courses.	February or July	Full-time: 1 year Part-time: up to 4 years
Postgraduate Certificate in Business <i>PGCertBus</i>	Gain general business knowledge and skills that can be applied to graduate positions across a wide range of industries. It acts as a pathway to other taught master's programmes such as the Master of Business, Master of Professional Accounting, and Master of Business Information Systems.	Any bachelor's degree with good grades in 300-level courses.	February or July	Full-time: 6 months Part-time: up to 2 years
Postgraduate Certificate in Information Systems and Technology <i>PGCertIST</i>	Further explore Information Systems to deepen your knowledge in the area.	A bachelor's degree with B average across 60 points of 300-level Information Systems or related courses.	February or July	Full-time: 6 months Part-time: up to 2 years
Postgraduate Certificate in Strategic Leadership <i>PGCertStratLdrship</i>	This online Certificate is designed for professionals who are looking to move into management and leadership and are seeking professional development in this area. Please note: In addition to the online offering, face-to-face offerings may also be available in 2024.	At least 5 years of practical, professional, or scholarly experience.	Multiple intakes throughout the year	Online full-time: 12 months Online part-time: up to 3 years
Postgraduate Diploma in Business <i>PGDipBus</i>	A flexible programme made up of 8 courses from the Master of Business and Master of Professional Accounting.	Any bachelor's degree with a B average or above in the 300-level or equivalent courses.	February or July	Full-time: 1 year Part-time: up to 4 years
Postgraduate Diploma in Business Administration <i>PGDipBA</i>	This Diploma offers an entry pathway to the Master of Business Administration (MBA) programme, and includes eight core courses from the MBA programme. Transfer to the MBA programme is available for those students who complete the Postgraduate Diploma in Business Administration with a B average or higher.	At least 5 years' management or leadership experience.	February, May, or August	Full-time: 1 year Part-time: up to 4 years
Postgraduate Diploma in Business Information Systems <i>PGDipBIS</i>	Gain skills leading to employment in information systems-related industries. You can go onto a study the Master of Business Information Systems.	Any bachelor's degree with a B average or above in the 300-level or equivalent courses.	February or July	Full-time: 1 year Part-time: up to 4 years
Postgraduate Diploma in Information Systems and Technology <i>PGDipIST</i>	Further explore Information Systems either to deepen your knowledge in the area or to prepare yourself for further research in the area.	A bachelor's degree with B average across 60 points of 300-level Information Systems or related courses.	February or July	Full-time: 1 year Part-time: up to 4 years

Graduate and postgraduate programmes (continued)

Qualification	Description	Requires	Start date	Duration
Master of Applied Finance and Economics <i>MAFE</i>	This is a master's degree in both Finance and Economics. Students take two semesters of advanced coursework in both subjects, followed by a practical applications course.	Any bachelor's degree with good grades. Must have intermediate economics and finance and basic statistics and calculus.	January (for international students), February, or July	Full-time: 12–18 months Part-time: up to 4 years
Master of Business <i>MBus</i>	Explore business basics as well as a specialist major focus in Financial Management, Management, Marketing, or Sustainable Supply Chain Management (not offered in 2024). It also includes project opportunities through our industry contacts.	Any bachelor's degree with a B average or above in the 300-level or equivalent courses.	February or July	Full-time: 17 months Part-time: up to 4 years
Master of Business Administration <i>MBA</i>	The MBA offers a chance to upskill, make a career change, and gain relevant business connections and experiences. The course structure incorporates compulsory and elective courses as well as a consulting project. There are also opportunities to attend seminars, guest lectures, and networking events.	At least five years' work experience, and completed either a bachelor's degree or the Postgraduate Diploma in Business Administration with a B average or higher.	February, May, or August	Full-time: 16 months Part-time: up to 5 years
Master of Business Information Systems <i>MBIS</i>	Take advantage of the increasing demand for 'tech-savvy' business graduates. Combining business studies with information systems, the MBIS is designed to equip you with the specialist knowledge and skills to manage technology-driven innovation in business.	Any bachelor's degree with a B average or above in the 300-level or equivalent courses.	February or July	Full-time: 17 months Part-time: up to 4 years
Master of Commerce <i>MCom</i>	The MCom is comprised of taught coursework complemented by independent research in the form of a thesis or project. With advanced knowledge, skills, and competencies, MCom graduates are well prepared for professional roles and business consulting.	A bachelor's degree in the same subject with a B+ average or above in 300-level courses or a relevant graduate diploma with good grades.	February or July [‡]	Full-time: 12–18 months Part-time: 18–36 months
Master of Professional Accounting <i>MPA</i>	The MPA is a conversion taught master's that will give you the skills, knowledge, and competencies to be a highly effective accountant. Leads to provisional membership of professional bodies such as Chartered Accountants Australia and New Zealand.	Any bachelor's degree with a B average or above in the 300-level or equivalent courses.	February or July	Full-time: 21–23 months Part-time: up to 5 years
Doctor of Philosophy <i>PhD</i>	The PhD comprises advanced research presented in a thesis. See page 12 for more information about PhD study at UC.	Bachelor's degree with first-class or second-class honours division 1, or research-based master's degree with first-class or second-class honours, or equivalent.	Beginning of any month	Full-time: 3–4 years Part-time: 4.5–6 years

[‡] Applicants who begin in July will normally need to spend 3 semesters (18 months) to complete the MCom. This is because there are mandatory courses which begin in February only. If you intend to start in July, please be aware that this will incur an additional 6 months of other expenses.

Ako | Education



UC's Te Kaupeka Ako Faculty of Education, builds on a 135-year tradition and is ranked among the world's top 250 universities for Education.*

The Faculty is committed to research excellence in teacher education, educational professional development, and youth and community leadership.

Professional development and specialisation

Many teachers and educational specialists wish to focus in an area of teaching they are passionate about, or they may wish to strengthen their practice or further develop a range of skills. This might be inclusive education, literacy, e-learning, languages, or leadership.

Others who are working with young people and leading community organisations can extend their knowledge and expertise, to better understand local and global issues and create meaningful change.

* QS World University Rankings by Subject, 2023.

Graduate and postgraduate teaching options

Students seeking to become registered teachers and who have already completed a recognised degree can apply for a graduate diploma (early childhood, primary, or secondary), postgraduate diploma, or master's degree (primary or secondary teacher education).

Supportive study environment

The Faculty offers an encouraging and collegial environment with delivery through on-campus classes or by distance, and full or part-time study.

The Faculty's teaching staff are education specialists who have close links with local schools and whose teaching draws on practical experience and the latest research.

Research

Faculty research advances educational knowledge and evaluates education practice, while also giving postgraduates opportunities to carry out research in topical aspects.

The Faculty has links with institutions internationally and offers services to enhance the professional development of educators both in Aotearoa and abroad, including customised professional development courses for teachers and teacher educators, customised courses, educational tours and consultancies, and staff and student exchanges.

Key areas of research include those represented by the Faculty's research hubs:

- Learning Environments
- Pedagogies of Possibility
- Te Puna Rangahau i-Ako | Digital Education Futures Lab
- Language and Literacy Research Lab
- Te Rū Rangahau | Māori Research Laboratory
- Te Pokapū Pāhekoheko Hapori UC Community Engagement Hub
- UC Child Wellbeing Research Institute.

Career opportunities

Teaching offers a creative, stimulating, and rewarding career that provides the opportunity to influence and shape many lives. Teaching also provides entry into careers beyond the classroom, with teaching experience being an excellent background for a wide range of jobs including careers in the public sector, and business and industry training.

Postgraduate study in Education can contribute to your employability. It enables you to extend your knowledge and skills, indicates your motivation and ability to persevere at a high level academically, and can make you more competitive in the job market.

Postgraduate study in Youth and Community Leadership enables you to develop your own personal leadership identity, gain key action skills, and learn about improving issues faced by youth and community organisations in local and global contexts.

Graduates have varied career opportunities available to them including work in education, government, commerce, social service agencies, community, and voluntary organisations.

Te Kaupeka Ako | Faculty of Education

T: +64 3 369 3333

E: educationadvice@canterbury.ac.nz

www.canterbury.ac.nz/education



“I love the connectedness I share with my teachers. Their support and guidance provided has really helped me make the right choices as a student teacher.”

Fariya

Graduate Diploma of Teaching and Learning (Secondary)

Education, leadership development, and teaching subject areas

Subject	Honours	Master's	PhD/EdD	PG Cert/Dip	Grad Cert/Dip
Initial Teacher Education (ITE) – teaching qualifications					
Early Childhood Education					•
Primary Education		•		•	•
Secondary Education		•		•	•
Educational professional development					
Aumiri Pounamu					•
Education		•	•	•	•
Digital Education Futures		•		•	
Hōaka Pounamu: Māori Bilingual and Immersion Teaching and Learning		•		•	
Inclusive and Special Education		•		•	
Leadership		•		•	
Literacy		•		•	
Specialist Teaching*		•		•	
Teaching and Learning Languages		•		•	
Teaching English to Speakers of Other Languages		•		•	
Tertiary Teaching**		•		•	
Youth and community leadership					
Youth and Community Leadership				•	

* Master of Specialist Teaching is only open to students who have recently completed the Postgraduate Diploma in Specialist Teaching.

** Tertiary Teaching is open to those already working in the tertiary teaching area.

Qualifications leading to Teacher Registration

NOTE: For the teaching qualifications listed below, applications are open anytime, but close on **1 December** (for domestic students) and **31 October** (for international students) the year prior to the programme commencing. Applications may close earlier if the teaching placement capacity has been reached.

Qualification	Description	Requires	Start date	Duration
Graduate Diploma in Teaching and Learning (Early Childhood) <i>GradDipTchLn(EC)</i>	For graduates interested in training to become an early childhood teacher. Special requirements apply for those for whom English is a second language.	Bachelor's degree. Acceptance into the programme is subject to a selection process.	January	Full-time: 36 months Part-time options available, up to 3 years
Graduate Diploma in Teaching and Learning (endorsed in Primary or Secondary) <i>GradDipTchgLn</i>	Primary: For graduates interested in training to become a primary school teacher. Consists of 150 points of coursework and includes 80 days of professional practice in schools. Special requirements apply for those for whom English is a second language.	Bachelor's degree. Acceptance into the programme is subject to a selection process.	January	Full-time: 1 year Part-time options available
	Secondary: For graduates interested in training to become a secondary school teacher. Consists of 150 points of coursework and includes 80 days of professional practice in schools. Special requirements apply for those for whom English is a second language. We have an alternate entry pathway for students who do not have a bachelor's degree but have work experience and are interested in becoming teachers of technology and te re Māori. To learn more, contact the Faculty.	Bachelor's degree with study from Levels 5 to 7 (ie, 100 to 300-level papers) in a subject area relevant to the secondary school curriculum. Acceptance into the programme is subject to a selection process.		
Postgraduate Diploma in Teaching and Learning (endorsed in Primary or Secondary) <i>PGDipTchgLn</i>	Primary: For graduates interested in training to become a primary school teacher. Consists of 150 points of coursework and includes 80 days of professional practice in schools. Special requirements apply for those whom English is a second language.	Bachelor's degree with at least a B average at 300-level. Acceptance into the programme is subject to a selection process.	January	Full-time: 1 year
	Secondary: For graduates interested in training to become a secondary school teacher. Consists of 150 points of coursework and includes 80 days of professional practice in schools. Special requirements apply for those for whom English is a second language.	Bachelor's degree with study from levels 5 to 7 (ie, 100 to 300-level papers in a subject area relevant to the school curriculum) and with at least a B average. Acceptance into the programme is subject to a selection process.	January	Full-time: 1 year
Master of Teaching and Learning <i>MTchgLn</i>	Primary: For graduates interested in training to become a primary school teacher. Consists of 180 points of coursework and includes 80 days of professional practice in schools. Special requirements apply for those whom English is a second language.	Bachelor's degree or higher degree in a disciplinary field appropriate to teaching and learning (with a B grade average at 300-level).	January	Full-time: 1 year
	Secondary: For graduates interested in training to become a secondary school teacher. Consists of 180 points of coursework and includes 80 days of professional practice in schools. Special requirements apply for those for whom English is a second language.	Bachelor's degree with study from levels 5 to 7 (ie, 100 to 300-level papers in a subject area relevant to the school curriculum) and with at least a B average. Acceptance into the programme is subject to a selection process.		

Professional development for Educators

Qualification	Description	Requires	Start date	Duration
Graduate Diploma in Māori Language and Pedagogies: Aumiri Pounamu <i>GradDipMLP</i>	Graduates with the GradDipMLP will gain an enhanced level of competence and confidence to teach te reo Māori and embed tikanga Māori and pedagogies into their teaching practice. You will gain deep, specialised knowledge of teaching in Māori medium settings and learn about curriculum and assessment specific to these settings. Tikanga-ā-iwi including mana whenua knowledge will be gained through this programme.	A New Zealand teacher education degree or recognised three-year degree in early childhood, primary, or secondary teaching in Aotearoa, and New Zealand teaching certification. An interview with a Selection Committee and other selection requirements including te reo Māori language competency. Approval by the Dean of Education and Health Sciences.	January	Part-time: up to 4 years
Postgraduate Certificate in Education <i>PGCertEd</i>	The PGCertEd is designed to provide those with an education or counselling background the opportunity to improve their professional practice and assess significant issues in education. Students may proceed to the PGDipEd or the MEd.	Degree with at least 60 points in Education; or an appropriate degree and have either completed a minimum 1-year teacher training course or have experience as a teacher, educator, or counsellor.	February, July, or November*	Full-time: 6–12 months Part-time: up to 2 years
Postgraduate Certificate in Tertiary Teaching <i>PGCertTertTchg</i>	Pursue a range of teaching and learning themes, to build on specific knowledge and to consider academic practices from various disciplines.	Be practising in tertiary teaching and have an appropriate bachelor's degree, or equivalent qualifications and experience in your field of teaching.	February or July	Part-time: 1–4 years
Postgraduate Diploma in Education <i>PGDipEd</i> — can be endorsed in the following:	The PGDipEd is designed to improve professional practice and examine critically significant issues in education. The PGDipEd can be completed unendorsed or endorsed in a specific area of interest (see below). Students with a B+ average or better may proceed to the MEd.	All PGDipEd endorsements require an appropriate degree with courses in Education, Psychology, or related discipline; or any bachelor's degree and have either completed a minimum 1-year teacher training course or have experience as a teacher, educator, or counsellor (a B grade average in 300-level courses is normally expected).	February or July	Full-time: 1 year Part-time: up to 4 years
<i>Digital Education Futures</i>	Improve your professional practice with ICT and investigate significant issues in this area.	Additional requirements for Leadership endorsement: At least 5 years' professional experience, as well as employment in a position of leadership responsibility, is required.		
<i>Inclusive and Special Education</i>	Improve your professional knowledge, practice, and ability to address significant issues in the field.			
<i>Leadership</i>	Gain effective leadership and management competencies to enhance and build your career.			
<i>Literacy</i>	Critically examines literacy underachievement through a combination of theory and practice.			
<i>Teaching and Learning Languages</i>	Gain an understanding and skills to teach languages and cater for students' linguistic needs.			
<i>Tertiary Teaching</i>	Pursue a range of teaching and learning themes, to build on specific knowledge and to consider academic practices from various disciplines.			

* November start subject to course availability.

Professional development for Educators (continued)

Qualification	Description	Requires	Start date	Duration
Postgraduate Diploma in Hōaka Pounamu <i>PGDipHP</i>	Designed to extend current teachers on the use of te reo Māori in the classroom. The programme aims to develop high-quality graduates who promote leadership and raise the knowledge of te reo Māori in bilingual, immersion, and mainstream settings.	A teaching qualification, or appropriate bachelor's degree with a major in Education or related discipline with a B grade average. Application involves a selection process including an interview and te reo Māori language competency assessment.	February or July	Full-time: 12 months Part-time: 24 months
Master of Education <i>MEd</i> – can be endorsed in the following:	A 180-point coursework (or 90 points of coursework and a 90-point thesis) pathway for students to further their knowledge of theory and research in education.	Appropriate degree with courses in Education, Psychology; or any degree, and a minimum 1-year teacher training course or have experience as a teacher, educator, or counsellor (a B grade average at 300-level required).	February, July, and November*	Full-time: 18 months Part-time: up to 5 years
<i>Curriculum and Pedagogy</i>	Improve your pedagogical practice and apply these skills to a specific curriculum area.			
<i>Digital Education Futures</i>	Improve your professional practice with ICT and investigate significant issues in this area.			
<i>Inclusive and Special Education</i>	Improve your professional knowledge, practice, and ability to address significant issues in the field.			
<i>Literacy</i>	Critically examines literacy underachievement through a combination of theory and practice.			
<i>Leadership</i>	Gain effective leadership and management competencies to enhance and build your career.			
<i>Teaching and Learning Languages</i>	Gain an understanding and skills to teach languages and cater for students' linguistic needs.			
<i>Tertiary Teaching**</i>	Pursue a range of teaching and learning themes, to build on specific knowledge and to consider academic practices from various disciplines.			

* November start subject to availability.

** This endorsement is for those already working in tertiary teaching.

Professional development for Educators (continued)

Qualification	Description	Requires	Start date	Duration
Master of Education (Thesis) <i>MEd(Thesis)</i>	A thesis qualification that allows students to demonstrate advanced knowledge in their field of educational research. You have the option of completing either: <ul style="list-style-type: none"> 120-point thesis 30-point research methods course and a 90-point thesis (this option is for students who have not studied research methods at postgraduate level) 	An honours degree or postgraduate diploma in education or other equivalent programme of study, with a B+ grade average.	Beginning of any month for thesis enrolments. February or July for those needing to complete the research methods course first.	Full-time: 2 years Part-time: up to 4 years
Master of Hōaka Pounamu <i>MHP</i>	Designed to extend current teachers on the use of te reo Māori in the classroom. The programme aims to develop high-quality graduates who promote leadership and raise the knowledge of te reo Māori in bilingual, immersion, and mainstream settings.	A teaching qualification, or appropriate bachelor's degree with a major in Education or related discipline, with a B grade average. Application involves a selection process including an interview and te reo Māori language competency assessment.	February or July	Full-time: 18 months Part-time: up to 4 years
Doctor of Education <i>EdD</i>	Aimed at Education professionals and other related fields. Doctoral students will synthesise theory and address questions of professional practice while further developing their leadership capacities.	A bachelor's degree with first or second class honours, or a master's degree with distinction or merit, and a minimum of 5 years' experience in a relevant professional role.	March 1	First two years part-time as part of a cohort; then completed over four years part-time or two years full-time.
Doctor of Philosophy <i>PhD</i>	For more details about PhD study, see pages 12-13 .	Bachelor's degree with first or second-class division 1 honours, or master's degree with first-class or second-class honours, or equivalent.	Beginning of any month	Full-time: 3-4 years Part-time: 4.5-6 years

Language educator programmes

Qualification	Description	Requires	Start date	Duration
Postgraduate Certificate in Teaching English to Speakers of Other Languages <i>PGCertTESOL</i>	Ideal fast-track qualification for those who may have come to the career of English language education through an indirect route and wish to undertake professional development or for graduates interested in entering the TESOL profession.	Appropriate bachelor's degree with a B grade average or better.	July or November	Part-time: 12–18 months
Master of Teaching English to Speakers of Other Languages <i>MTEsol</i>	A one-year professional qualification aimed at producing skilful English language educators for a wide variety of educational settings in the 21st century, from early childhood through to tertiary level. With a future focus, this programme will give students the skills, knowledge, and capabilities to be adaptable in the face of future English language developments, as well as technological and pedagogical advances.	Appropriate bachelor's degree (a B grade in 300-level courses is normally expected). Relevant work experience will also be considered.	February, July, or November	Full-time: 1 year Part-time: up to 4 years

Youth and Community Leadership programmes

Qualification	Description	Requires	Start date	Duration
Postgraduate Certificate in Youth and Community Leadership <i>PGCertYCL</i>	The certificate will appeal to people interested or already engaged in community work as leaders.	Bachelor's degree with B average.	February	Full-time: 1 semester Part-time: 1 year
Postgraduate Diploma in Youth and Community Leadership <i>PGDipYCL</i>	The diploma will examine leadership theories in order for students to justify their own approaches to leadership practice. It includes features of Māori and Pasifika leadership, leadership as partnering, and youth and community leadership in a global context.	Bachelor's degree with B average.	February	Full-time: 1 year Part-time: up to 4 years



“UC is like a big family. Everyone is friendly; not just the lecturers and students, but the rest of the staff. They analysed my background and career plan, giving me the right information to make it possible. Without them, I could not have been able to choose the degree and courses that suited me best.”

Angelina

Postgraduate Diploma in Business, Master of Education in Teaching and Learning Languages

Pūhanga | Engineering



Te Kaupeka Pūhanga Faculty of Engineering provides internationally recognised qualifications, professional development, and is in the global top 100 for Civil Engineering.*

Founded in 1887 as the first School of Engineering in Aotearoa, UC's Te Kaupeka Pūhanga | Faculty of Engineering is internationally recognised for its teaching and research excellence.

The Faculty offers both coursework and research-based qualifications, including postgraduate certificates, master's, and doctoral degrees. Many qualifications are flexible and are ideal for the working professional interested in upskilling, including those who live outside of Ōtautahi Christchurch.

* QS World University Rankings by Subject, 2023.

Postgraduate resources

UC Engineering features well-equipped workshops, laboratories, and computer facilities, and a specialist Te Puna Pūkaha me te Pūtaiao Engineering and Science Library (EPS), with access to many print and online resources and subject specialists who can help with finding information and referencing.

University and industry scholarships are also available for postgraduate students.

Academic and industry expertise

You'll benefit from the Faculty's close interaction with industry, helping attract financial support for research as well as opportunities to establish professional networks.

A number of research centres are housed in Te Kaupeka Pūhanga | Faculty of Engineering and there are strong relationships with other research centres at UC and in Aotearoa.

Research projects can involve national research institutes and organisations in industry.

The Faculty regularly hosts visiting academics from top international universities as part of the University's Erskine programme, providing opportunities for our students and staff to interact with world leaders in their respective fields.

Research

Te Kaupeka Pūhanga | Faculty of Engineering's overarching aim is to contribute to the community in all areas of our research, from safe buildings to medical technology, and provide excellent graduates who will help fulfil this mission.

Creativity and innovation are encouraged and research collaborations are often interdisciplinary, with projects spanning across departments and research centres within UC. Strong links with related disciplines including Forestry, Computer Science, Mathematics, Statistics, Product Design, Physics, Astronomy, Chemistry, and Geology enable highly specialised interdisciplinary research at postgraduate level.

Major research themes in the Faculty of Engineering include sustainability, energy, security and safety, environment, society and community, innovative design for economic growth, and pure mathematics.

Research centres include the Electric Power Engineering Centre (EPECentre), Tangata Hangarau, Hangarau Tangata | Human Interface Technology Laboratory (HIT Lab NZ), Wireless Research Centre (WRC), Spatial Engineering Research Centre (SERC), and the UC Quake Centre.

Examples of research areas

Chemical and Process Engineering

Energy and fuels, battery technology, catalysis, biochemical processes, food process engineering, environmental research, electrochemical engineering, industrial measurement technology, process safety, computational techniques in chemical engineering, and wood technology.

Civil and Natural Resources Engineering

Structural, geotechnical, transportation, environmental, water and fluids, hydrological and ecological, renewable energy, humanitarian engineering, architectural engineering, construction management, fire, structural fire, and earthquake engineering.

Electrical and Computer Engineering

Acoustics, communications, computational imaging, nanotechnology, networking, power electronics, and power systems.

Forest Engineering

Operational efficiency, forestry engineering, equipment development and testing, worker safety, road and stream crossing design, and environmental standards.

Human Interface Technology

Virtual reality, augmented reality, applied game design, and human-robot interaction.

Mechanical Engineering

Acoustics, aerospace, automation, automotive, autonomous systems, biomedical, composites, computational mechanics, computer-aided design, control and instrumentation, design and ergonomics, earthquake engineering, energy systems, Industry 4.0, manufacturing, materials, mechanics, microtechnology, robotics, structural analysis, and thermofluid mechanics.

Software Engineering

Cyber security, machine learning, computer vision, artificial intelligence, computer graphics, human-computer interaction, networking, autonomous robots/drones, intelligent tutoring and health systems, software engineering processes and practices, software quality, spacial data science, and computer science education.

Professional development courses

Today's engineering environment requires professional engineers to be highly skilled, up-to-date, and technically competent in their chosen field. Our professional development courses will help working engineers understand and apply new technologies, stay ahead of industry trends, and advance their career.

Teaching staff

Our lecturers are a mix of academics and industry experts, giving our students access to both research knowledge and professional experience.

Delivery format

These courses are run in block-mode or flexible format, enabling participants to enrol in individual courses that fit around work commitments. They are also ideal for those living outside of Ōtautahi Christchurch.

Block courses are generally run over a three-day period of lectures during a week, with a six-week break in between for independent study and readings, followed by another three-day period of lectures. Block courses and flexible study options may be offered in:

- Architectural Engineering
- Civil Engineering
- Construction Management
- Earthquake Engineering
- Fire Engineering
- Geotechnical Engineering
- Structural Engineering
- Structural Fire Engineering
- Transportation Engineering
- Water Engineering

What do I get at the end of it?

As part of a Certificate of Proficiency, several of these block courses can be taken as a one-off course without committing to a qualification. Alternatively, courses may be credited to the Postgraduate Certificate in Engineering, Postgraduate Certificate in Civil Engineering, Master of Engineering Studies, Master of Civil Engineering, or Master of Architectural Engineering.

Eligibility

To be eligible for these courses, you should hold a four-year Bachelor of Engineering with Honours degree, or another relevant degree, or suitable work experience. Some courses will have required prerequisites. It is best to discuss your background with the Postgraduate Director of Studies before enrolment.

www.canterbury.ac.nz/engineering/professional-development

Career opportunities

Over the past decade, there has been an increase in the number of top industrial positions filled by engineers with postgraduate qualifications.

These qualifications are now viewed as more than a way of specialising for a future in research or academia, and allow you to gain skills which will open new, high-level career options.

Postgraduate degrees in Engineering prepare students for careers in business leadership positions, where extended analytical skills are increasingly valued.

www.canterbury.ac.nz/careers

Te Kaupeka Pūhanga | Faculty of Engineering

T: +64 3 369 4271 or +64 3 369 4272

E: engpgdegreeadvice@canterbury.ac.nz

www.canterbury.ac.nz/engineering



“At the beginning of my course it was a challenge because I started this major almost from scratch, but the class covers both basic and applied levels that actually secured me a job even before I graduated!”

Yuto

Postgraduate Diploma in Applied Data Science
Data Transformation Lead at Partly

Subject areas

Subject	Master's	PhD	PG Cert/Dip
Aerospace Engineering*	•		
Applied Data Science	•		•
Architectural Engineering	•		•
Artificial Intelligence	•		
Bioengineering	•	•	
Chemical and Process Engineering	•	•	
Civil Engineering	•	•	•
Construction Management	•		•
Earthquake Engineering	•	•	•
Electrical and Electronic Engineering	•	•	
Engineering	•		•
Engineering Geology	•	•	
Engineering Management	•	•	•
Financial Engineering	•		•
Fire Engineering	•	•	•
Forest Engineering		•	
Geotechnical Engineering	•		•
Human Interface Technology	•	•	
Mathematical Sciences	•		
Mechanical Engineering	•	•	•
Renewable Energy	•		•
Software Engineering	•		
Structural Engineering	•		•
Structural Fire Engineering	•		•
Transportation Engineering	•	•	•
Water Engineering	•		•

* This qualification is subject to CUAP approval.

Postgraduate programmes

Qualification	Description	Requires	Start date	Duration
Postgraduate Certificate in Architectural Engineering <i>PGCertArchEng</i>	Provides at-work building design professionals with practice-focused education. The Certificate uses a holistic approach to integrated collaborative building design, supporting the drive to improve sustainability and affordability of buildings.	BE(Hons) or an appropriate 4-year bachelor's degree in a subject related to building design.	February or July	Full-time: 6 months Part-time: up to 2 years
Postgraduate Certificate in Civil Engineering <i>PGCertCivilEng</i>	Offers a flexible programme in advanced knowledge of civil infrastructure and industry. It offers a pathway into the Master of Civil Engineering.	BE(Hons), or BSc(Hons) in appropriate subjects.	February or July	Full-time: 6 months Part-time: up to 2 years
Postgraduate Certificate in Engineering <i>PGCertEng</i>	For professional engineers seeking advanced technical training or students looking for a one-semester advanced qualification. May be awarded unendorsed, or endorsed in Fire Engineering or Mechanical Engineering. You may be able to transfer to a master's degree.	BE, BE(Hons), or BSc(Hons) in appropriate subjects.	February or July	Full-time: 6 months Part-time: up to 4 years

Postgraduate programmes (continued)

Qualification	Description	Requires	Start date	Duration
Postgraduate Diploma in Applied Data Science <i>PGDipADS</i>	Build your data science capabilities and combine these with the skills and knowledge acquired from previous studies.	A university undergraduate degree, B average in relevant undergraduate 300-level courses.	February or July	Full-time: 1 year Part-time: 4 years
Postgraduate Diploma in Engineering Management <i>PGDipEM</i>	Designed as a pathway qualification, this Diploma is fully delivered within the Master of Engineering Management. There is a strong focus on project management, stakeholder engagement, and sustainability. You will have small group classes, flexibility, and be able to build close connections with industry.	BEngTech, BE(Hons), BSc(Hons) in appropriate subjects with a GPA of at least 3 in 300-level and higher courses.	February	Full-time: 10–17 months
Master of Aerospace Engineering <i>MAerospaceEng</i> (subject to CUAP approval)	Gain specialised knowledge and skills in Aerospace Engineering, combining a thesis and coursework. You will learn about established and emerging aerospace technologies and processes, and be introduced to the impact of the aerospace industry in Aotearoa and worldwide, including contemporary practice in professional ethics, legal, environmental, and safety guidelines.	BE(Hons) with first or second-class honours, BSc(Hons), BSc in appropriate subjects with GPA of at least 5.	February or July	Full-time: 18 months Part-time: 3 years
Master of Applied Data Science <i>MADS</i>	Build your data science capabilities and combine these with the skills and knowledge acquired from previous studies. This degree can add to employability and career prospects.	A degree with a high level of attainment in appropriate subjects.	February or July	Full-time: 1 year Part-time: up to 3 years
Master of Architectural Engineering <i>MArchEng</i>	A practice-focused taught Master's degree for gaining professional, work-ready collaborative building design skills, and advanced training in selected technical areas of building design. This degree also caters for practitioners wanting to upskill. The degree can be endorsed in Building Services and Energy Engineering, Integrated Building Design, or Structural Engineering.	An appropriate 4-year bachelor's degree with first or second-class honours in a subject related to building design, or a Postgraduate Certificate in Architectural Engineering with a B average. One year of professional practice experience is strongly recommended.	February or August*	Full-time: 1 year Part-time: up to 4 years
Master of Artificial Intelligence <i>MAI</i>	Learn and use advanced Artificial Intelligence (AI) theories, software, and tools. You will get to make real-world applications through project work in an area of AI.	A bachelor's degree in a relevant subject like Computer Science, Computer Engineering, Software Engineering, or Data Science, with a B Grade Point Average in 300-level Computer Science courses.	February or July	Full-time: 1–1.5 years Part-time: 3 years
Master of Civil Engineering <i>MCivilEng</i>	A taught Master's that enhances your knowledge and skills, improving your career prospects. The <i>MCivilEng</i> can be awarded unendorsed, or endorsed in Construction Management, Earthquake Engineering, Geotechnical Engineering, Renewable Energy, Structural Engineering, Structural Fire Engineering, Transportation Engineering, and Water Engineering. The <i>MCivilEng</i> also includes an Indigenous Consultation and Engagement workshop.	BE(Hons) with first or second-class honours, or BSc(Hons) with first or second-class honours in appropriate subjects, or a <i>PGCertCivilEng</i> with good grades.	February or July	Full-time: 1 year Part-time: 4 years

July start subject to course availability.

* August only start for Structural Engineering, to be confirmed for Building Services and Energy Engineering.

Postgraduate programmes (continued)

Qualification	Description	Requires	Start date	Duration
Master of Engineering ME	An endorsed degree that aims to provide a learning environment where you can develop your problem-solving skills through supervised research. The ME has thesis-only endorsements in Bioengineering, Chemical and Process Engineering, Electrical and Electronic Engineering, Mechanical Engineering, Software Engineering, and Transportation Engineering. The ME also has endorsements that require coursework and research in Civil Engineering, Construction Management, and Earthquake Engineering.	BE(Hons) with first or second-class honours, or BSc(Hons) with first or second-class honours in appropriate subjects; or a PGCertEng with a GPA of 5 or more. Application is required by 10 January (for February intake) and 15 June (for July intake).	Start date can vary. Check with the department.	Full-time: 1–3 years
Master of Engineering in Fire Engineering* MEFE	Fire engineers specialise in the application of science and engineering principles to protect people and their environment from destructive fire. In the first half of the degree, students take block courses in areas such as fire dynamics and fire safety and systems. Online learning software is used to allow for flexible study. The second half of the degree requires a thesis.	BE(Hons), or BSc(Hons) in appropriate subjects, with first or second-class honours, or a PGCertEng with a GPA of 5 or more. It is recommended that international students apply by June .	February	Full-time: 16–36 months
Master of Engineering Management MEM	This programme is designed to meet the need for engineering managers in Aotearoa. It is focused on project management, stakeholder engagement, and sustainability. You will have small group classes, flexibility, close connections with industry, and the ability to apply integrated technical and business skills in an industry-based project.	BE(Hons) or other appropriate degree.	February	Full-time: 12–19 months
Master of Engineering Studies MEngSt	This taught master's degree is for professional engineers seeking advanced technical training. The degree may be awarded unendorsed or endorsed in Mechanical Engineering or Renewable Energy.	BE(Hons) or BSc(Hons) with first or second class honours in appropriate subjects; or a PGCertEng with a GPA of 5 or more.	February or July	Full-time: 1 year Part-time: 5 years
Master of Financial Engineering MFE _{Eng}	This cross-disciplinary degree directly links real-world problems in financial engineering to an underlying theoretical framework. You will become capable of high-level performance in the financial industry.	Any bachelor's degree (including some Statistics, Mathematics, and Finance courses, or completion of a qualifying course), normally with a B+ grade average.	February	Full-time: 1 year
Master of Fire Engineering Studies MFireEngSt (subject to CUAP approval)	This taught master's degree is for professional engineers seeking advanced technical training in Fire Engineering.	BE(Hons) or BSc(Hons) with first or second-class honours, or PGCertEng with a GPA of 5 or more.	February or July	Full-time: 1 year Part-time: 5 years

* Those who do not have an appropriate background in fire engineering may be required to take ENGR403 Introduction to Fire Engineering in January prior to being approved into the programme.

Postgraduate programmes (continued)

Qualification	Description	Requires	Start date	Duration
Master of Human Interface Technology <i>MHIT</i>	Human Interface Technology aims to improve interactive technology to meet users' needs. You will develop specialist knowledge of interface design principles, the ability to evaluate hardware and software, and research and development skills. This degree prepares you for a career with wide application to areas such as health, education, entertainment, and business.	Bachelor's degree with honours in an appropriate field.	February	Full-time: 12 months
Master of Mathematical Sciences <i>MMathSci</i>	This degree offers flexible study to upskill in mathematics, computational and applied mathematics, and statistics. Your studies give you the opportunity to critique theory and create new knowledge in the mathematical sciences field. The degree can be awarded unendorsed or endorsed in Computational and Applied Mathematics, Mathematics, Statistics, Data Science*, or Financial Engineering*.	Bachelor's degree in a relevant subject, and have passed at least 60 points of your 300-level courses with at least a B grade average.	February or July	Full-time: 18 months Part-time: 3 years
Doctor of Philosophy <i>PhD</i>	The PhD comprises advanced research presented in a thesis. For more information, see page 12 .	Bachelor's degree with first or second-class division 1 honours, or master's degree with first or second-class division 1 honours, or equivalent.	Beginning of any month	Full-time: 3–4 years Part-time: 4.5–6 years

July start subject to course availability.

* Subject to CUAP approval.



“One of my favourite things about UC was the passion of the academic staff. They are all really excited about what they do, which motivates the students to do their best, push their boundaries and find the field which gets them excited.”

Jane
PhD in Civil Engineering

Kōwaiwai | Fine Arts



UC's Te Kura Kōwaiwai Ilam School of Fine Arts has been producing high-quality graduates since 1882. Many have contributed to cultural life and achieved acclaim in Aotearoa and globally.

Te Kura Kōwaiwai | School of Fine Arts' staff are highly qualified and experienced artists, graphic designers, curators, filmmakers, art historians, and art theorists of world standing.

The School offers opportunities to gain valuable exhibition experience through an ongoing professional relationship with Te Puna o Waiwhetū | Christchurch Art Gallery.

Colourful experiences await

The extensive exhibition programme is closely linked to the artist-in-residence and teaching programmes. Global links are also evident in a busy schedule of visiting international artists who share their expertise with postgraduate students. Similarly, international student exchange agreements provide opportunities to attend prominent international art schools including Nova Scotia College of Art and Design.

On-campus facilities

The School provides you with ample studio space, well-equipped workshops, digital labs, darkrooms, and film and video facilities. In addition, there is an on-site gallery, and a well-resourced visual arts and art history section in UC's Puaka-James Hight Library. This features a slide collection of 100,000 images and one of the country's top fine arts collections.

A reputation for innovation

Our reputation for innovation and excellence is reflected in the high number of graduates represented among leading artists and museum staff in Aotearoa.

Career opportunities

Alongside the creative and practical skills learned, Fine Arts graduates develop excellent skills in organisation and time management. These skills prepare graduates for a wide range of employment opportunities.

In particular, graduates who have taken courses in Photography, Film, and Graphic Design have clear career prospects in rapidly expanding industries. Other Fine Arts graduates have access to a wide range of vocations within a growing art world.

Recent graduates have been employed as artists, art gallery directors, photojournalists, commercial photographers, film directors, designers, consultants, art conservators, illustrators, fashion designers, art critics, art historians, graphic designers, lecturers, and art teachers.

www.canterbury.ac.nz/careers

Fine Arts events

Exhibitions

Te Kura Kōwaiwai | Ilam School of Fine Arts
www.canterbury.ac.nz/arts/schools-and-departments/school-of-fine-arts/exhibitions

UCSA Arts

Clubs include UC Film Society, UC Photography.
ucsa.org.nz/clubs
www.ucsa.org.nz/events

Te Kura Kōwaiwai | Ilam School of Fine Arts
T: +64 3 369 3377
E: artsdegreeadvice@canterbury.ac.nz
www.canterbury.ac.nz/arts/schools-and-departments/school-of-fine-arts

Subject areas

Subject	Master's	PG Cert/Dip
Art Curatorship		•
Film	•	•
Graphic Design	•	•
Painting	•	•
Photography	•	•
Sculpture	•	•

Postgraduate programmes

Qualification	Description	Requires	Start date	Duration
Postgraduate Diploma in Art Curatorship <i>PGDipArtCuratorship</i>	The PGDipArtCuratorship consists of four courses including 'The Art Museum Past and Present', a special project in staging an exhibition, a gallery internship, and one course from Art History honours schedule.	BA, BFA, or a bachelor's degree and relevant professional experience.	February or July*	Full-time: 1 year Part-time: 2 years
Postgraduate Diploma in Fine Arts <i>PGDipFineArts</i>	The PGDipFineArts programme comprises advanced technical level studio work, and written research in either Film, Graphic Design, Painting, Photography, or Sculpture.	BFA with a B grade average; or a degree or a three-year diploma in fine arts, and professional experience.	February	Full-time: 1 year Part-time: 2 years
Master of Fine Arts <i>MFA</i>	The MFA programme comprises either a submission of work in Film, Graphic Design, Painting, Photography, or Sculpture.	BFA(Hons) or equivalent, or significant professional practice or teaching experience. A special application for admission must be made by 1 November .	February	Full-time: 1 year Part-time: 2 years

* July start subject to course availability.



“My study taught me, among other things, ways of seeing, to think critically, and to be open-minded. Being able to apply these things in my everyday life is rewarding and makes it all worthwhile.”

Mikaela
Master of Fine Arts in Sculpture

Ngahere | Forestry



Te Kura Ngahere School of Forestry at UC is internationally renowned for research and postgraduate education over a range of subjects.

Our areas of expertise include forest management, biodiversity, pest management, GIS and remote sensing, silviculture, forest economics, marketing, harvesting and transportation, forest ecology and conservation, wood science and wood quality, forest genetics and breeding, and forest soils.

UC is the only university in the country offering internationally recognised professional postgraduate Forestry programmes.

Close connections

International experts visit regularly to share their knowledge through the Erskine Fellowship programme and an industry visitors programme.

The School's close relationship with other departments at UC, including Te Kura Pūtaiao Koiora | School of Biological Sciences, Te Kaupeka Pūhanga | Faculty of Engineering, Te Kura Umanga | UC Business School, and Te Kaupeka Ture | Faculty of Law, allows postgraduate students to benefit from the broad range of academic and technical expertise.

A number of scholarships are available for postgraduates — some funded by UC, some by the government in Aotearoa, and others by organisations and donations.

Te Kura Ngahere | School of Forestry provides a range of services to the industry including research, consultancy, professional development (CPD), and continuing education.

www.forestry.ac.nz

Field work and stations

UC's excellent laboratory and field facilities support postgraduate research activities. Students have many opportunities to work in the field, visit other forestry organisations throughout the country, and participate on field trips to Kawatiri Westport; at field stations near Arthur's Pass; in the Whakatū Nelson region; as well as the Waitaha Canterbury area.

Research

The School's academic staff are actively engaged in research on forest management, forest valuation, forest modelling, tree breeding and quantitative genetics, forest economics, silviculture, GIS and remote sensing, urban forestry, wood quality, entomology, biodiversity, forest ecology and conservation, forest harvesting, forest engineering, and bioenergy.

Forestry research at UC is divided into four major clusters:

- sustainable land management
- forest engineering
- managing forest variability
- forestry as a business.

Postgraduate programmes

Qualification	Description	Requires	Start date	Duration
Postgraduate Diploma in Forestry <i>PGDipFor</i>	For those wanting to enhance their undergraduate studies, you will complete 120 points from courses in the Master of Forestry Science schedule, normally including a forest management or a silviculture course.	BForSc or equivalent, or other relevant 3-year bachelor's or higher degree and relevant experience in a forestry-related area.	February or July	Full-time: 1 year Part-time: 2 years
Master of Forestry Science <i>MForSc</i>	This degree will give you a head start into forest management, governance, or research at an advanced level. The degree may be taken by examination and report; by examination and thesis; or by thesis alone. You can complete a professional master's degree with coursework and a report in two years. You will enjoy small classes and a wide variety of courses to choose from, ranging from silviculture to advanced IT applications in forestry.	4-year BForSc, or other bachelor's degree with appropriate subjects, or a PGDipFor.	February or July; anytime start for thesis-only students	Full-time: 1-3 years
Doctor of Philosophy <i>PhD</i>	The PhD comprises advanced research presented in a thesis. For more details, see page 12 .	Bachelor's degree with first or second-class division 1 honours, or master's degree with first or second class honours, or equivalent.	Beginning of any month	Full-time: 3-4 years Part-time: 4.5-6 years

New Zealand Dryland Forests Initiative

Te Kura Ngahere | School of Forestry is a shareholder in the New Zealand Dryland Forests Innovation (NZDFI). The NZDFI is a collaborative research and development programme with the vision to develop a sustainable multi-regional hardwood industry based on planting genetically improved durable eucalypt forests from 2020 to 2050. The Schools' contribution looks at tree breeding, site and silviculture, forest health, wood quality, and products.

Thirteen PhD candidates within the School have been supported by NZDFI to undertake research.

The Wood Technology Research Centre

The WTRC facilitates information exchange among staff and students engaged in wood-related research. Participants are from the Departments of Chemical and Process Engineering, Forestry, Civil and Natural Resources Engineering, Electrical and Computer Engineering, Mechanical Engineering, Chemistry, and Biological Sciences.

Career opportunities

With forestry being one of Aotearoa New Zealand's biggest exports and a major industry worldwide, UC Forestry graduates are in high demand. Forestry offers rewarding careers in areas such as tree breeding, road engineering, timber harvesting/processing, marketing, planning, policy, biosecurity, biodiversity, conservation, plantation, and sustainable land management.

You will develop a valuable set of transferable skills, including problem-solving, decision-making, project management, teamwork, economic and commercial awareness, and computing skills and geospatial techniques.

www.canterbury.ac.nz/careers

Te Kura Ngahere | School of Forestry
T: +64 3 369 3500
www.canterbury.ac.nz/engineering/schools/forestry



“Studying at the world-leading New Zealand School of Forestry at UC, plus the outdoor activities Christchurch presents, it was a very straightforward decision to choose UC as my destination.”

Vikash
PhD in Forestry Science

Oranga | Health



Te Kaupeka Oranga Faculty of Health offers an interdisciplinary postgraduate education with a range of clinical and non-clinical programmes.

Te Kaupeka Oranga | Faculty of Health fosters collaborative initiatives within the University, with other tertiary institutions, and within the health sector. Increasingly, employment in the health sector requires postgraduate qualifications, particularly for senior roles.

The School's programmes and research activities respond to the dynamic nature of the health sector and its workforce. We have qualifications for all levels of interest in the health sector – whether you work in a clinical or non-clinical capacity, want to develop your professional practice, or are interested in joining the workforce.

Research

UC has a strong profile in health research and teaching in the fields of biochemistry; clinical psychology; speech and language pathology and audiology; health service management; health technologies; Māori health; medical

physics; and population health including epidemiology, health geography, health promotion, and education.

The School has a wide range of research interests including health informatics, refugees, chronic diseases and childhood disorders, primary health care, and workforce issues for specific health sector groups such as the Pacific workforce.

Research students share facilities with academics and researchers, which fosters collaboration.

The Health Precinct – Manawa

Manawa is a world-class hub for health education, research, and innovation located in the heart of Ōtautahi Christchurch's health precinct. It is a collaborative partnership between UC, Ara Institute of Canterbury, and Te Whatu Ora | Health New Zealand Waitaha to share infrastructure and facilities.

Manawa means heart, patience, or breath in te reo Māori, and was gifted to the partnership as a reflection of the proverb “Manawa whenua, manawa tangata”, which describes the intimate connection between the health of our environment and human health.

We have postgraduate courses in counselling, child and family psychology, health sciences, sport, and nursing.

UC's contribution to the Health Precinct includes postgraduate teaching, research, clinical practice, and professional development across several disciplines with specialist education and training on site.

Career opportunities

The health sector is one of the biggest employers in Aotearoa with a wide range of clinical opportunities. There are also includes many non-clinical roles, which make up about one-third of the total health workforce.

There are health-related career opportunities in local and central government, the voluntary sector, social services, industry, and research.

In an increasingly diverse and ageing society, career opportunities will continue to expand. A health sciences specialisation can lead to work in such areas as health promotion, health and community, behaviour change, health policy, administration, information management, health technology assessment, and research.

www.canterbury.ac.nz/careers

Te Kaupeka Oranga | Faculty of Health

T: +64 3 369 3333

E: studyhealth@canterbury.ac.nz

www.canterbury.ac.nz/health

Subjects

Subjects	Master's	PhD	PG Cert/Dip	Grad Cert/Dip
Child and Family Psychology	•		•	
Counselling	•			
Counselling Studies			•	
Environment and Health	•		•	
Health Behaviour Change	•		•	
Health and Community	•		•	
Health Information Management	•		•	
Health Leadership and Management	•		•	
Health Sciences	•	•	•	
Nursing	•			
Palliative Care	•		•	
Sport Coaching				•
Sport Science	•		•	
Taha Hinengaro Health and Wellbeing Practice			•	



“Studying Health Sciences is a unique field – you not only learn about how to enhance community health and wellbeing, but in doing that, it somehow provides you with the tools, tips, and tricks to enhance your own health and wellbeing.”

Sophie

Master of Health Sciences with an endorsement in Health and Community

Postgraduate programmes

Qualification	Description	Requires	Start date	Duration
Graduate Certificate in Sport Coaching <i>GradCertSpC</i>	Provides practising coaches and those in the sports industry (or those who wish to work in it) the chance to develop their professional coaching skills.	A bachelor's degree, or ability to satisfy the Dean of relevant post-secondary study and work experience.	January, February, or July	Full-time: 6 months Part-time: up to 3 years
Postgraduate Certificate in Counselling Studies <i>PGCertCounSt</i>	Provides formal recognition for people wishing to add counselling skills alongside complementary professional qualifications eg, in education or health.	Any relevant bachelor's degree with a B grade average or better at 300-level.	February	Part-time: up to 2 years
Postgraduate Certificate in Health Sciences <i>PGCertHealSc</i>	Allows health professionals, non-clinical members of the health workforce, and others interested in the health sector a chance to examine a range of issues in health sciences, and where relevant to improve their professional practice.	Relevant bachelor's degree, or appropriate health professional qualification.	February or July	Full-time: 6 months Part-time: up to 2 years
Postgraduate Certificate in Palliative Care <i>PGCertPC</i>	Develops health practitioners' skills in palliative care and introduces palliative care as a research field. You will gain the knowledge needed to provide a holistic approach to the assessment, planning, implementation, and evaluation of the needs of patients and whānau living with a life-limiting condition.	Relevant bachelor's degree or appropriate health professional qualification, as well as relevant professional experience, and access to a relevant clinical placement.	February or July	Part-time: Normally completed over 2 years
Postgraduate Certificate in Sport Science <i>PGCertSS</i>	An ideal qualification for those wanting professional development in sport science knowledge and industry expertise.	Relevant bachelor's degree in sport and/or science with a B average or better.	February or July	Full-time: 6 months
Postgraduate Diploma in Child and Family Psychology <i>PGDipChFamPsyc</i>	A professional qualification designed for those who wish to become registered child and family psychologists with the New Zealand Psychologists' Board. Entry is limited to 15 places — applications close on 1 October .	Bachelor's degree in Psychology or equivalent and be enrolled in or completed an approved master's or PhD.	February	Full-time: 3 years Part-time: up to 4 years
Postgraduate Diploma in Sport Science <i>PGDipSS</i>	Develop expertise in the sporting industry and upskill on sporting knowledge for further career opportunities.	Relevant bachelor's degree in sport and/or science with a B average or better.	February or July	Full-time: 1 year
Master of Arts MA or Master of Science MSc	In Child and Family Psychology — go to www.canterbury.ac.nz/health/qualifications-and-courses/child-and-family-psychology	See pages 17 (MA) and 57 (MSc) .	February	See pages 17 (MA) and 57 (MSc)
Master of Counselling† <i>MCouns</i>	This is the only master's counselling degree in Te Waipounamu South Island and uses a solution-focused model of counselling. You will learn to identify and use systematic, effective ways to help clients. Some courses are also available to Health/Education postgraduate students. Entry is limited to 15 places — applications close 1 October .	Relevant bachelor's degree with a B average or better and with relevant professional experience or suitability to be a counsellor.	February	Full-time: 2–4 years Part-time: up to 6 years

† This is a limited-entry programme and applications close on **October 1** of the year preceding entry. If you are also applying for admission to UC, please ensure you apply several weeks before this date, to allow time for your application to be processed.

Postgraduate programmes (continued)

Qualification	Description	Requires	Start date	Duration
Master of Health Sciences <i>MHealSc</i>	In this degree, you may either follow a general programme, or focus on a specialisation and receive your qualification endorsed in one of several areas, like health information management, palliative care, etc. Involves a research component.	Relevant bachelor's degree or appropriate health professional qualification with B average.	February or July	Full-time: Not less than 2 years Part-time: up to 4 years
Master of Health Sciences (Nursing) <i>MHealSc(Nursing)</i>	A graduate entry pathway to Registered Nurse practice.	Relevant bachelor's degree or appropriate health professional qualification with B average.	February	Full-time: 2 years Part-time: up to 5 years
Postgraduate Diploma in Health Sciences <i>PGDipHealSc</i> – can be endorsed in the following:	Aimed at people who are currently employed or seeking employment in a health-related field, social services, or local or central government. You will complete a programme of advanced, specialised study and receive your qualification either unendorsed or endorsed in one of several areas listed below.	Relevant bachelor's degree, or appropriate health professional qualification with a B average or better.	February or July	Full-time: 1 years Part-time: up to 4 years
<i>Environment and Health</i>	Develop an understanding of how our physical or social environment affects public health.			
<i>Health and Community</i>	Learn skills and knowledge to design and implement evidence-based health interventions in community settings.			
<i>Health Behaviour Change</i>	Work on changing behaviours which are injurious to health using techniques such as motivational interviewing.			
<i>Health Information Management</i>	Gain an understanding of how information technology is central to monitoring health information and managing an efficient health services system.			
<i>Health Leadership and Management</i>	Explore leading and motivating people in healthcare organisations.			
<i>Palliative Care</i>	Specialise in interprofessional healthcare provision for people who are living with and dying from active, progressive diseases or conditions.			
<i>Taha Hinengaro – Health and Wellbeing Practice</i>	Meet the increasing need for integrated practice models including Motivational Interviewing (MI), Cognitive Behavioural Therapy (CBT), and Focused Acceptance and Commitment Theory (FACT).			

Postgraduate programmes (continued)

Qualification	Description	Requires	Start date	Duration
Master of Health Sciences Professional Practice <i>MHealScProfPr</i>	Coursework-based version of the MHealSc with 180 points of courses. Can be awarded unendorsed or endorsed in Environment and Health, Health Behaviour Change, Health Information Management, Health and Community, Health Leadership and Management, and Palliative Care.	Relevant bachelor's degree, or appropriate health qualification with a B average or better. Requirements may be waived if the candidate can show practical or professional experience.	February or July	Full-time: 18 months Part-time: up to 4 years
Master of Sport Science <i>MSS</i>	Gain sport science research insights from experts within and outside of UC in areas such as high performance exercise physiology and biomechanics.	Relevant bachelor's degree in sport and/or science with a B average or better.	February or July	Full-time: 12–18 months
Doctor of Health Sciences <i>DHSc</i>	A flexible doctorate designed for health professionals and those working in related fields who want to utilise health data and research to improve the outcomes and experiences of health consumers, whānau, and communities. It consists of a research portfolio and thesis.	Bachelor's degree with first or second-class division 1 honours, or master's degree with first or second-class honours or equivalent.	February	First two years part-time as part of a cohort; then completed over four years part-time or two years full-time.
Doctor of Philosophy <i>PhD</i>	The PhD comprises advanced research presented in a thesis. For more details, see page 12 .	Bachelor's degree with first or second-class division 1 honours, or master's degree with first or second class honours, or equivalent.	Beginning of any month	Full-time: 3–4 years Part-time: 4.5–6 years

* Students are normally expected to have some bioscience in their academic background with a B average or better.



“The University has been hugely supportive, helping me to travel all around New Zealand and the world to further my education. I’m truly thankful to UC for helping me grow into who I am today.”

Mark
Master of Health Sciences
Academic Kaikōtuitui | Dean, PE & Health,
Haeata Community Campus

Ture me te Muru Taihara Law and Criminal Justice



Founded in 1873, Faculty of Law has a proud history of excellence in teaching, research, and scholarship. We have an international reputation for producing outstanding graduates from a professionally relevant and community-focused law school.

UC Law offers a wide range of opportunities for postgraduate studies, and is ranked in one of the world's top 250 law schools (QS World University Rankings by Subject, 2023).

Leading teachers and researchers

Our teachers are leaders in their respective fields across areas like International Law, Public Law, European and Comparative Law, as well as the full range of Common Law subjects. They are responsible for writing many key Aotearoa New Zealand textbooks and for international publishers LexisNexis and Reuters.

Many of our academics are on editorial boards for a number of well-respected international journals including the Journal of Medical Law and the Media and Arts Law Review. UC is also home to the Canterbury Law Review and the New Zealand Yearbook of International Law.

Our strong reputation

UC Law has a particularly strong reputation in the fields of International Law and Governance and offers a master's programme in International Law and Politics. You also have the opportunity to further your studies in areas of specific expertise offered by the School.

UC Law also offers research-focused degrees such as the general Master of Laws (LLM). It involves completing research courses and a dissertation, or a by thesis only option (currently the LLM by coursework pathway is not open to new enrolments). There is also a PhD programme.

Research

There are three research clusters at UC — the Centre for Commercial Law, the International and Comparative Law Group, and the Institute of Law, Emergencies and Disasters — all of which welcome postgraduate involvement.

UC Law has strong international links and students are encouraged and supported in developing their international research profile. Postgraduate research students may apply to the staff research fund to finance these activities.

In addition to UC's scholarship opportunities, one university PhD Scholarship is reserved for study in the Faculty of Law. Interested students are encouraged to contact the Law team before making a formal application.

Library staff offer postgraduate students specialist training in research methods for both Law and Criminal Justice.

Criminal Justice

UC's Master of Criminal Justice (MCJ) offers an advanced working knowledge of the Criminal Justice system. The MCJ is a mix of taught courses, a research dissertation, and project or internship opportunities for first-hand practical experience in criminal justice.

This degree has a strong focus on developing skills sought by the justice sector; including bicultural knowledge and competence, critical analysis of current and future policy, and professional understanding and theories behind crime and rehabilitation.

Our Graduate Diploma in Criminal Justice (GradDipCJ) is an opportunity to complement or extend your undergraduate studies with further study in Criminal Justice. You will graduate with a qualification that is vocationally oriented towards industry needs.

Student experience

- You'll be welcomed as an integral part of UC Law and enjoy the collegial atmosphere between students and staff.
- UC Law has a range of student clubs, including The Law Students' Society, which has over 800 members and organises many social events throughout the year.
- Te Pūtairiki | Māori Law Students' Association provides a supportive environment for Māori law students.
- Crimsoc is the club for dedicated to all things criminal justice.

Postgraduate programmes

Qualification	Description	Requires	Start date	Duration
Graduate Diploma in Criminal Justice <i>GradDipCJ</i>	Allows you to further your study with a vocationally oriented qualification in Criminal Justice.	Bachelor's degree.	February or July*	Full-time: 1–2 years Part-time: up to 4 years
Master of Criminal Justice <i>MCJ</i>	A relevant qualification for those seeking employment in a range of criminal justice sector occupations and professions, including Police, Corrections, the Ministry of Justice, and in policy development and social service roles.	BCJ with a B average, or equivalent.	February	Full-time: 1 year Part-time: up to 3 years
Master of Laws (International Law and Politics) <i>LLM(IntLaw&Pols)</i>	Designed for those who wish to develop specialist knowledge in international law and politics. You will take courses in international law and international politics, plus a dissertation. The degree opens up careers in the diplomatic service, specialised legal practice, government, international organisations, non-governmental organisations, and the military.	LLB (or equivalent) with good grades.	February or July**	Full-time: 1–2 years Part-time: 2–4 years
Master of Laws <i>LLM</i>	The LLM offers a choice of over 40 topics for specialised research where you can study by thesis alone.	LLB (or equivalent) with good grades.	February or July**; or anytime start for thesis-only	Full-time: 1–2 years Part-time: 2–4 years
Doctor of Philosophy <i>PhD</i> : • Law • Criminal Justice	The PhD comprises advanced research presented in a thesis. For more details, see page 12 .	Bachelor's degree with first or second-class honours division 1, or master's degree with first or second-class honours division 1, or equivalent.	Beginning of any month	Full-time: 3–4 years Part-time: 4.5–6 years

* July start subject to course availability.

** Although it is possible to start in July, we encourage all students to start in February. This is because there are two compulsory courses for the degree which are offered in the February semester only. It is beneficial for students to have taken these courses before they begin their optional courses.

Career opportunities

Postgraduate study in Law allows you to develop expertise in particular fields of legal specialisation, broaden your knowledge in a range of legal subjects, and combine law study with related disciplines.

Your study can lead to careers in the legal profession, the public sector, and non-governmental organisations, among many other career paths. It also offers the possibility of a career in academic teaching and research. Our alumni include leading academics and policy makers in Aotearoa and abroad.

Postgraduate study in Criminal Justice will give you a professional understanding of Aotearoa policy within government and public sector, and of the criminal justice system. Skills gained in research, statistical analysis, writing and presenting, and bicultural engagement within real-world contexts are solid foundations for a career in criminal justice.

You will be equipped for a career in the criminal justice fields, in particular roles within Ngā Pirihimana o Aotearoa | Police, Tāhū o te Ture | Ministry of Justice, and Ara Poutama Aotearoa | Department of Corrections.

www.canterbury.ac.nz/careers

Te Kaupeka Ture | Faculty of Law
T: +64 3 369 3888
E: law-enquiries@canterbury.ac.nz
www.canterbury.ac.nz/law



“I am passionate about law, and my ambition is to transition from professional to academic work because I enjoy teaching and research.”

Ibnu
PhD in Law

Puoro | Music



UC's Te Kura Puoro School of Music has a vibrant, welcoming, and stimulating environment to study and perform in.

UC's Music staff are respected nationally and internationally as composers, researchers, recording artists, musicologists, and performers. Performance tutors and lecturers are leading practitioners in their fields.

A key part of UC's Music experience is taking part in many concerts and recitals, seminars and workshops, master classes, and demonstrations. Many of our performance postgraduates are also well established in professional careers in Aotearoa and globally, having won national competitions and awards.

Equipment and facilities

Te Puna Mātauraka o Waitaha | Central Library and Te Kura Puoro | School of Music resource centre contain an extensive collection of scores, books, and recordings, including resources not found anywhere else in the country.

Sophisticated digital environments are provided through specialist software for the transformation and manipulation of sound. Other music facilities include top-quality pianos and string instruments, practice rooms, a chamber organ, and Balinese gamelan.

Music premises in the city

UC's music students can undertake lessons and conduct music performances in the restored Chemistry building in Te Matatiki Toi | Arts Centre situated in central Ōtautahi Christchurch. UC's use of this historic space means more performance opportunities and collaborations, and music students can interact with the city's local and international arts scene.

You have the opportunity to participate in Ōtautahi Christchurch's many amateur and professional groups, whether in opera, theatre, orchestral music, choral, and instrumental. A number of orchestral students perform regularly with the Christchurch Symphony Orchestra.

A vibrant arts scene

With over 200 concerts and theatre performances every year, there will be plenty of opportunities for you to 'experience the Arts'.

Concerts

UC Concerts
www.canterbury.ac.nz/events/list-events

UCSA Music and Arts
www.ucsa.org.nz/events

Performing arts clubs

MUSOC, DramaSoc, TuneSoc, UCanDance, and many more. www.ucsa.org.nz/clubs

Research

The School's research activities range broadly across the disciplines of musicology, ethnomusicology, composition, and performance. Areas of expertise include performance (voice, piano, organ, and most orchestral instruments), composition, music history and musicology, ethnomusicology, musicianship skills, and conducting.

Career opportunities

Graduates find positions in orchestras, opera houses, conservatories, universities, schools, and other education contexts. They are prominent in areas of musical leadership with community groups such as choirs and orchestras.

Graduates often work in fields such as journalism, television, and radio (planning and production), publishing, and in technical areas, including recording.

People with musical talents are in demand in the hi-tech areas of digital software and music technology, and are becoming increasingly sought after by various festival organisers and arts organisations.

www.canterbury.ac.nz/careers

Te Kura Puoro | School of Music

T: +64 3 369 4411

E: music@canterbury.ac.nz

www.canterbury.ac.nz/arts/schools-and-departments/school-of-music

Graduate and postgraduate programmes

Qualification	Description	Requires	Start date	Duration
Bachelor of Arts with Honours majoring in Music <i>BA(Hons)</i>	The BA(Hons) is for high-achieving Bachelor of Arts students (or equivalent). Students can complete their own research as well as taught electives.	BA, or any bachelor's degree plus relevant graduate diploma.	February or July*	Full-time: 1 year Part-time: up to 2 years
Bachelor of Music with Honours <i>MusB(Hons)</i>	For graduates of the MusB (or equivalent) with good grades who wish to extend themselves. May be taken in Composition and Performance.	MusB; entry into Performance is limited and applications for auditions close on 20 September of the preceding year. Applications for Composition and Musicology are due by 31 January of the year of study.	February	Full-time: 1 year
Graduate Diploma in Arts majoring in Music <i>GradDipArts</i>	Study Music in-depth after your bachelor's. Designed for graduates wanting entry to postgraduate qualifications in Music, or to extend or upgrade their existing qualifications.	Any bachelor's degree.	February or July*	Full-time: 1 year Part-time: up to 5 years
Postgraduate Certificate in Arts majoring in Music <i>PGCertArts</i>	Further study (60 points) in one area of Music specialisation. Can be undertaken part-time.	BA or an equivalent degree with grades to a specified level.	February or July*	Full-time: 6 months Part-time: 1 year
Postgraduate Diploma in Arts majoring in Music <i>PGDipArts</i>	Advanced study in Music. Students can choose between a number of course combinations, and it offers a convenient taught pathway to other postgraduate study opportunities.	BA or an equivalent degree with grades to a specified level.	February or July*	Full-time: 1 year Part-time: up to 2 years
Master of Arts majoring in Music <i>MA</i>	A 180-point Master of Arts degree by coursework and dissertation. Prerequisites vary between programmes, but normally good grades in 300-level courses in the subject concerned are required.	BA or MusB.	February or July	Full-time: 18 months Part-time: up to 3 years
Master of Arts (Thesis) majoring in Music <i>MA(Thesis)</i>	The Master of Arts (Thesis) degree consists of a 120-point thesis in a chosen subject. Prerequisites vary between programmes, but normally good grades in 300-level courses in the subject concerned are required.	BA(Hons) or MusB(Hons).	Anytime	Full-time: 2 years Part-time: up to 4 years
Master of Music <i>MMus</i>	Follows the MusB(Hons) and may be taken in composition or performance to an advanced technical level. Students intending to enrol should choose courses carefully to ensure prerequisites have been met.	MusB(Hons) or equivalent, with good grades. Evidence of composition quality is required. Entry to the Performance option is limited and applications for audition close on 15 September of the preceding year. Subject to approval by the Programme Coordinator.	February or July	Full-time: 1 year Part-time: 2 years
Doctor of Musical Arts <i>DMA</i>	The DMA is aimed at those wishing to undertake advanced research in music composition or performance. It comprises scholarly research (thesis) and performance practice (public music performance or the presentation of compositions). Normally requires an audition, interview, and/or submission of previous academic work and recommendation from the School of Music.	Bachelor's degree in Music with first or second-class division 1 honours, or master's degree in Music with distinction or merit (or equivalent). An audition interview, and/or portfolio of previous work is also required.	Beginning of any month	Full-time: 3 years Part-time: 4-5-6 years
Doctor of Philosophy <i>PhD</i>	The PhD comprises advanced research presented in a thesis. For more details, see page 12 .	Bachelor's degree with first or second-class division 1 honours, or master's degree with first or second-class division 1 honours, or equivalent.	Beginning of any month	Full-time: 3-4 years Part-time: 6 years

* July start subject to course availability.

Hanga Otinga | Product Design



Te Kura Hanga Otinga School of Product Design has qualifications that are a unique blend of engineering, science, design, and entrepreneurship.

Gain skills in product design and service innovation practice, advanced business knowledge related to product innovation, and strong problem-solving and critical evaluation abilities.

Research

Staff across Te Kura Hanga Otinga | School of Product Design are involved in a range of research, including computer vision-based natural feature registration, computer graphics, augmented and virtual reality, artificial intelligence, societal aspects of design, design methods, ethics and morality in design, the pedagogy of design, bio-based and sustainable materials, bio-inspired design and engineering, material perception in the context of product design, and additive manufacturing/3D printing of bio-based materials.

Industry Collaboration

Te Kura Hanga Otinga | School of Product Design works closely with industry to ensure that our qualifications are relevant and applicable to current businesses. We also undertake projects and research alongside many of our industry partners.

Design Practice Teaching Fellows

We have the additional benefit of a group of Design Practice Teaching Fellows who work predominantly in industry but also teach within the School, bringing an industry focused approach to our teaching.

Career opportunities

Our master's programmes are driven by innovation in our modern, dynamic economy. Product Design graduates with business sense as well as technical skills will suit any part of the product creation lifecycle – designing concepts, testing prototypes, pitching to sellers, and marketing to consumers.

Entrepreneurial skills are highly sought after in the global economy, and with our programmes you will be well prepared to follow your own product, service, or business venture aspirations.

Depending on the focus in your degree, you may suit roles in commercial, educational, IT, consultancy, quality assurance (QA), government, design and advertising sectors, research and development (R&D), product review and critique, and marketing analysis within enterprises needing skilled graduates.

www.canterbury.ac.nz/careers

Te Kura Hanga Otinga
School of Product Design

T: +64 3 369 0299

www.canterbury.ac.nz/engineering/schools/school-of-product-design

Postgraduate programmes

Qualification	Description	Requires	Start date	Duration
Postgraduate Certificate in Product Design <i>PGCertProdDesign</i>	This Certificate offers both practical and theoretical studies in designing product concepts for home, business, and commercial industry use.	BProdDesign with GPA 5 or above at 300-level; or Conjoint BProdDesign and BCom or BProdDesign and BSc with GPA 5 or above at 300-level; or other appropriate design degree with GPA 5 or above at 300-level.	February or July	Full-time: 18 months Part-time: 2 years
Postgraduate Certificate in Product Innovation <i>PGCertProdInnovation</i>	Open to students of any study background, this Certificate offers advanced practical and theoretical skills in creating products for entertainment, homeware, cosmetics, IT, food, healthcare, and many other industries.	Bachelor's degree with GPA 5 or above.	February or July	Full-time: 18 months Part-time: 2 years
Master of Product Design <i>MProdDesign</i>	This degree uses UC's research expertise in a range of commerce, IT, and engineering fields. You will gain advanced knowledge of product design practice, particularly related to your area of design specialisation. The programme provides a mixture of practical work and theory with original supervised research.	BProdDesign with GPA 5 or above at 300-level; or Conjoint BProdDesign and BCom or BProdDesign and BSc with GPA 5 or above at 300-level; or other appropriate design degree with GPA 5 or above at 300-level.	February or July	Full-time: 18 months Part-time: 3 years
Master of Product Innovation <i>MProdInnovation</i>	Open to students of any study background, this degree is a perfect opportunity to access specialised facilities and industry experts at UC while beginning to develop your own product or business ideas.	Bachelor's degree with GPA 5 or above.	February or July	Full-time: 18 months Part-time: 3 years
Doctor of Philosophy <i>PhD</i>	The PhD comprises advanced research presented in a thesis. For more details, see page 12 .	Bachelor's degree with first or second-class division 1 honours, or master's degree with first or second-class division 1 honours, or equivalent.	Beginning of any month	Full-time: 3–4 years Part-time: 6 years

Pūtaiao | Science



UC scientists are involved in groundbreaking work; they have discovered a new plant species, halved the rate of pneumonia in stroke patients, and helped fight mosquito-borne diseases in Tonga.

UC is ranked in the top 100 universities in the world for Geography, and Linguistics; and in the top 200 for Earth and Marine Sciences (Sustainable Coasts, Water Resource Management), Geophysics (Environmental Hazards and Disasters, Spatial Data Science), Geology, and Agriculture and Forestry (Forestry Science).*

The Master of Science in Medical Physics is accredited by The Australasian College of Physical Scientists & Engineers in Medicine.

* QS World University Rankings by Subject, 2023.

Expert UC staff are joined by visiting international academics every year, through the Erskine programme. Specialists from all over the world come to UC to teach and collaborate, providing unparalleled access to expertise.

Science facilities at UC are world-class and are enhanced by our Rutherford Regional Science and Innovation Centre (RRSIC), which includes teaching and research laboratories for physics, astronomy, chemistry, geology, geography, and biological sciences.

Research

All Science departments at UC are involved in innovative research which has an international reputation. Typical research can be found in projects as diverse as conservational genetics, developing novel nanomaterials, detecting microplastics in our environment, producing speech perception technology, understanding the health benefits of micronutrients, as well as identifying air pollution mitigators.

UC's earth scientists are heavily engaged in natural hazard research (earthquakes, volcanic eruptions, landslides), geophysics, climate, and geothermal research.

Working with industry and external organisations internationally, our world-leading projects are funded from both within Aotearoa and internationally.

www.canterbury.ac.nz/research

Study in a unique locations

UC offers research opportunities in the field that no other Aotearoa university can match. Our field stations are unique in Aotearoa; you could study the alpine environment and ecology at Cass in Waitaha Canterbury, or explore the diverse geological landscapes at Kawatiri Westport.

UC is a partner in the Southern African Large Telescope (SALT) project, and operates a field station in Nigeria as part of the Nigerian Montane Forest project.

Best stargazing site on Earth

Astronomy students and staff use the Ōtehiwai Mount John Observatory near Takapō Tekapo set within the Aoraki-Mackenzie Dark Sky Reserve, one of the biggest dark sky areas in the world. The observatory is home to six telescopes, including Aotearoa New Zealand's biggest telescope, which can observe 50 million stars each clear night. Experts credit it as one of the best stargazing sites on Earth.



Career opportunities

Alongside your valuable subject knowledge, you will become better at problem-solving, teamwork, and communication. You will be able to use the latest technology during your studies, making you well suited to fields involving scientific discoveries and applied research. Studying Science opens up many career pathways, such as in research, business, industry, education, environmental science, health, and government organisations.

Postgraduate study in science is an opportunity to obtain specialist knowledge in a particular topic leading to further advancement. Access to UC's centres of research and innovation, and field stations enable you to conduct inspiring research and get a taste for the sort of employment prospects you can pursue after study.

www.canterbury.ac.nz/careers

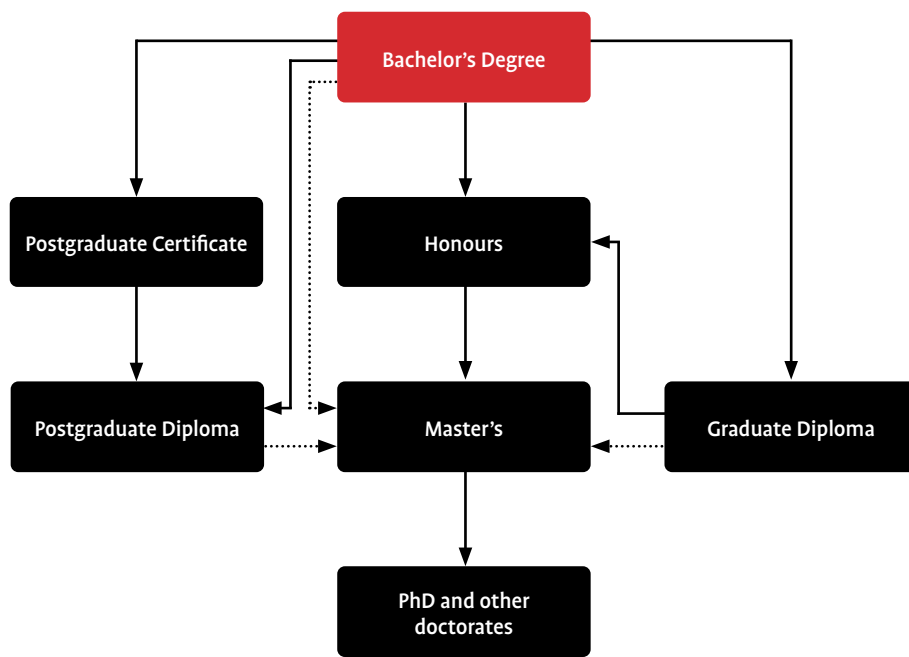
Pūtaiao | Science

T: +64 3 369 4141

E: science@canterbury.ac.nz

www.canterbury.ac.nz/science

Research pathways in the Faculty of Science



.....> Indicates pathways are available in some programmes



“I’m particularly interested in creating maps and displaying information in a way that helps people who need to make critical decisions. I chose to study at UC for its international reputation in Geography and because I wanted to be part of a strong research community.”

Charlie

Professional Master of Geospatial Science and Technology

Subject areas

Subject	Honours	Master's	PhD	PG Cert/Dip	Grad Cert/Dip
Antarctic Studies		•	•	•	
Applied Data Science		•		•	
Artificial Intelligence		•			
Astronomy	•	•	•	•	•
Audiology		•	•		
Biochemistry	•	•	•	•	•
Biological Sciences	•	•	•	•	•
Biotechnology	•	•	•	•	
Cellular and Molecular Biology	•	•	•	•	
Chemistry	•	•	•	•	•
Child and Family Psychology		•		•	
Clinical Psychology				•	
Computational and Applied Mathematical Sciences	•	•	•	•	
Computer Science	•	•	•	•	•
Data Science	•	•	•	•	•
Disaster Risk and Resilience		•	•		
Ecology	•	•	•	•	
Economics	•	•	•	•	•
Economics and Mathematics	•				
Engineering Geology			•		
Environmental Science	•	•	•	•	
Finance		•	•	•	•
Finance and Mathematics	•				
Finance and Statistics	•				
Financial Engineering	•	•			
Geography	•	•	•	•	•
Geology	•	•	•	•	•
Geospatial Science and Technology		•		•	
Industrial and Organisational Psychology		•	•		
Linguistics			•		•
Mathematics	•	•	•	•	•
Mathematics and Philosophy	•		•		
Mathematics and Statistics	•				

Subject areas (continued)

Subject	Honours	Master's	PhD	PG Cert/Dip	Grad Cert/Dip
Mathematical Physics	•		•		
Mathematical Sciences (see page 36)		•			
Medical Physics	•	•	•	•	
Medical Physics (Clinical)		•	•	•	
Microbiology	•	•	•	•	
Organisational Psychology*		•		•	
Philosophy		•	•	•	•
Physics	•	•	•	•	•
Psychology	•	•	•	•	•
Science Education			•		
Spatial Analysis for Public Health		•			
Speech and Language Pathology		•			
Speech and Language Sciences		•	•	•	
Statistics	•	•	•	•	•
Urban Resilience and Renewal		•			
Water Resource Management			•		
Water Science Management		•			

* Subject to CUAP approval.

Graduate and postgraduate programmes

NOTE: We offer part-time options for our programmes – please contact the Science Student Advisor who can help plan your study.
www.canterbury.ac.nz/science/current-students/academic-support

Qualification	Description	Requires	Start date	Duration
Graduate Diploma in Science <i>GradDipSc</i>	For graduates seeking to qualify for other postgraduate qualifications in Science, or to extend or upgrade their existing qualification/s. See pages 54–55 for a list of subjects offered.	Any bachelor's degree. Acceptance into majors will depend on the standard and relevance of previous studies.	February or July	Full-time: 1 year
Bachelor of Science with Honours <i>BSc(Hons)</i>	A one year full-time programme of study that includes a 30-point research project undertaken in the major subject of the degree. This project can be a helpful introduction to developing research skills for further study.	BSc with a B average at 300-level in relevant subjects.	February or July	Full-time: 1 year
Postgraduate Certificate in Antarctic Studies <i>PGCertAntaStud</i>	Examine major scientific and environmental themes as well as contemporary issues facing Antarctica.	Any bachelor's degree.	November	Full-time: 14 weeks

Graduate and postgraduate programmes (continued)

Qualification	Description	Requires	Start date	Duration
Postgraduate Certificate in Geospatial Science and Technology <i>PGCertGST</i>	Gain foundational experience and knowledge of geospatial science and technology. Graduates will be prepared for entry-level geospatial roles, and also for further postgraduate study.	Undergraduate degree with a B average minimum or recognised professional discipline-specific experience.	February or July	Full-time: 6–12 months
Postgraduate Certificate in Science <i>PGCertSc</i>	Build on subjects you took at undergraduate level with this Certificate, or study for professional development, or if you want more in-depth knowledge in a particular area.	Bachelor of Science or equivalent degree, or qualify for entry in your chosen subject of postgraduate study.	February or July	Full-time: 6 months
Postgraduate Diploma in Applied Data Science <i>PGDipADS</i>	Build your data science capabilities and combine these with the skills and knowledge acquired from previous studies.	A degree with a B average in relevant 300-level undergraduate courses.	February or July	Full-time: 1 year
Postgraduate Diploma in Clinical Psychology <i>PGDipClinPsyc</i>	Professional qualification in Clinical Psychology. A maximum of 16 people are selected each year.	MA, MSc, or PhD in Psychology, or BA(Hons) or BSc(Hons) in Psychology and enrolled in a PhD. Application due 20 September .	February	2 years of coursework and at least 1 year of practical work experience
Postgraduate Diploma in Cognitive Behaviour Therapy <i>PGDipCBT</i>	Cognitive Behaviour Therapy (CBT) is an evidence-based, psychologically informed talking therapy. It has proven effectiveness in treating substance misuse, and common mental health issues including depression and anxiety.	A bachelor's degree in psychology with a B- Grade Point Average.	February	Part-time: 3 years
Postgraduate Diploma in Geospatial Science and Technology <i>PGDipGST</i>	Gain experience and knowledge of geospatial science and technology. You will be prepared for entry-level geospatial roles and for further postgraduate study.	Undergraduate degree with a B average and/or recognised professional discipline-specific experience.	February	Full-time: 12 months
Postgraduate Diploma in Organisational Psychology* <i>PGDipOrgPsyc</i>	Organisational psychologists help create a positive, inclusive, and professional work culture, as well as a sustainable work-life balance. This Diploma is a great opportunity for those with non-clinical experience wanting to become registered psychologists.	A 240-point master's or PhD specialising in Organisational Psychology, and proof of paid or unpaid employment relevant to organisational psychology to be used towards the internship component of the Diploma.	February	Full-time: 1 year
Postgraduate Diploma in Science <i>PGDipSc</i>	Build on subjects you took at undergraduate level with this Diploma, or study for professional development, or if you want more in-depth knowledge in a particular area. Subject options are on pages 54–55 .	BSc or other bachelor's degree and approved undergraduate science courses, with at least a B- Grade Point Average in 300-level courses.	February or July	Full-time: 1 year
Master of Antarctic Studies <i>MAntaStud</i>	Combining work with an Antarctic partner organisation, coursework, and an Antarctic-related research dissertation, you will gain a 360-degree view of Antarctic issues. Ideal for careers requiring a solid background in Antarctic science or policy.	PGCertAntaStud and evidence of ability to complete advanced level academic study, with a B Grade Point Average in 300-level courses.	February** or November	Full-time: 1 year

* This qualification is subject to CUAP approval.

** February for students who have already completed the Postgraduate Certificate in Antarctic Studies.

Graduate and postgraduate programmes (continued)

Qualification	Description	Requires	Start date	Duration
Master of Applied Data Science <i>MADS</i>	Build your data science capabilities and combine these with the skills and knowledge acquired from previous studies.	An undergraduate degree with a B average in relevant 300-level courses.	February or July	Full-time: 1 year (or 20 months for students who don't have a Data Science background)
Master of Artificial Intelligence <i>MAI</i>	Learn and use advanced Artificial Intelligence (AI) theories, software, and tools. You will get to make real-world applications through project work in an area of AI.	A bachelor's degree in a relevant subject with a B Grade Point Average in 300-level Computer Science courses, or recognised professional experience.	February or July	Full-time: 1–1.5 years
Master of Disaster Risk and Resilience <i>MDRR</i>	This is an introduction to a rapidly evolving interdisciplinary field — you will gain an understanding of current disaster risk and resilience research and practice fields; disaster risk drivers, risk communication, and disaster risk reduction strategies; and disaster resilience-building theory and practices.	Any bachelor's degree relevant to Disaster Risk and Resilience, normally with a B grade average or higher in the final year of that degree.	February	Full-time: 1 year
Master of Financial Engineering <i>MFE_{ng}</i>	This cross-disciplinary degree directly links real-world problems in financial engineering to an underlying theoretical framework. You will become capable of high-level performance in the financial industry.	Any bachelor's degree (including some Statistics, Mathematics, and Finance courses or completion of a qualifying course), normally with a B+ average.	February	Full-time: 1 year
Master of Mathematical Sciences <i>MMathSci</i>	This programme is part of the Engineering qualifications as UC. Please see page 36 for more info, or contact the postgraduate Engineering Student Advisor.	Bachelor's degree in a relevant subject, and have passed at least 60 points of your 300-level courses with at least a B grade average.	February or July	Full-time: 18 months
Master of Science <i>MSc</i>	The MSc normally consists of coursework and a thesis. Those who have qualified for the equivalent of a BSc(Hons) or PGDipSc with appropriate grades in the subject may be admitted to the MSc by thesis-only in that subject. See our 30+ subject list on pages 54–55 .	BSc or BSc(Hons); or PGDipSc; or any bachelor's degree and a qualifying programme. Child and Family Psychology has other criteria — contact the School of Health Sciences.	February or July	Full-time: 2 years Part II (thesis only): Full-time: 1–2 years

Graduate and postgraduate programmes (continued)

Qualification	Description	Requires	Start date	Duration
Master of Spatial Analysis for Public Health <i>MSAPH</i> <i>(not open to enrolments in 2024)</i>	This qualification combines expertise on public health issues with GIS technologies. Spatial health data is fundamental to assess hazards from environmental exposure, and the impact of health interventions on the wellbeing of communities.	A bachelor's degree with a B Grade Point Average in 300-level courses and some basic prior experience/training in Statistics, programming (eg, R or Python) and GIS is required to enter this programme.	February	Full-time: 12–18 months
Master of Urban Resilience and Renewal <i>MURR</i>	Focus on how communities respond to challenges that cities are facing around the world. You will engage with community groups and local government through coursework and a research project.	Relevant bachelor's degree eg, Geography, Environmental Science, Sociology.	February	Full-time: 1 year
Master of Water Science and Management <i>MWSM</i>	You will gain specialist knowledge, the ability to work in interdisciplinary teams, and experience in community engagement. You will be prepared to work as water scientists and decision-makers in the public and private sectors.	Relevant bachelor's degree.	February	Full-time: 1 year
Professional Master of Computer Science <i>PMCS</i>	Designed to provide advanced subject knowledge in computer science, this applied degree enables upskilling in the theory and application of advanced computer science.	A BSc degree in Computer Science or equivalent in relevant computing discipline, with a B Grade Point Average in 300-level courses or relevant professional work experience.	February	Full-time: 1 year
Professional Master of Engineering Geology <i>PMEG</i> <i>(not open to enrolments)</i>	The only qualification of its kind in Australasia; this is a multidisciplinary area applying geological sciences to engineering work, identifying and mitigating geological hazards, and aspects of land-use planning.	BSc in Geology or Earth Sciences, or BE(Hons) in Civil Engineering or Natural Resources Engineering, or relevant professional work experience.	February	Full-time: 1 year
Professional Master of Geospatial Science and Technology <i>PMGST</i>	This will equip current and future geospatial professionals with the advanced skills required for geospatial leadership roles in government, industry, and research.	Relevant undergraduate degree with a B Grade Point Average in 300-level courses, or at least 3 years' professional experience.	February	Full-time: 1 year
Doctor of Philosophy <i>PhD</i>	The PhD comprises advanced research presented in a thesis. For more details, see page 12 .	Bachelor's degree with first or second-class division 1 honours, or master's degree with first or second-class division 1 honours, or equivalent.	Beginning of any month	Full-time: 2–4 years

Tauwhiro Hapori | Social Work



UC's Social Work programme is one of the earliest established in Aotearoa and offers internationally-recognised qualifications.

The range and flexibility of study options allow graduates already employed as social workers, or those wishing to gain a first professional Social Work qualification, to undertake further studies. Postgraduates acquire skills which enable them to provide leadership in social work practice, policy development, research, education and training, and management.

Staff remain involved in their particular areas of practice. Postgraduate students benefit from the programme's commitment to interactive teaching styles as well as access to dedicated computer facilities and office space.

Research

The programme has developed strong links between research, teaching, and practice, and enjoys close relations with social work agencies in the community.

Research interests cover a wide range of social work issues including interpersonal violence, indigenous cross-cultural theory and practice, policy and practice on ageing, community development, social policy, and clinical social work.

Career opportunities

Social workers are employed in both the public and private sectors, providing direct services to children, families, the aged, people who have committed offences, and people with disabilities, and indirect services in social sector planning, policy development, and research.

Graduates work in a wide variety of jobs, including as community development workers, therapists, youth workers, field workers, counsellors, case managers, probation officers, iwi social workers, hospital social workers, service coordinators, policy analysts, and researchers.

Social Work graduates are highly sought after internationally, especially in the United Kingdom and Australia.

www.canterbury.ac.nz/careers

Te Kaupeka Toi Tangata | Faculty of Arts
T: +64 3 369 3377
E: artsdegreeadvice@canterbury.ac.nz
www.canterbury.ac.nz/arts



“My fieldwork educators have been extremely helpful, and my fieldwork placements are giving me a great platform to apply and refine my skills.”

Tom
Master of Social Work (Applied)

Postgraduate programmes

Qualification	Description	Requires	Start date	Duration
Master of Social Work (Applied) MSW(App)	Students with an approved social science degree can complete a recognised professional qualification over two years leading to registration as a social worker. Some parts of this degree can be completed on a part-time basis, which offers some flexibility to those with family or employment commitments.	Any bachelor's degree with a B average in 300-level courses, and courses in social research and human development, or relevant practice experience, or qualifying programme. Limited entry, applications due 30 September .	February	Full-time: 2 years Part-time: up to 6 years
Master of Social Work (by thesis) MSW	This degree is for social work practitioners with specialist practice, supervisory, management, or policy analysis and development responsibilities. The programme of study and research can be designed to meet your professional needs and interests. You must complete a thesis.	BSW with first or second-class division 1 honours; or any bachelor's degree, plus either a Graduate Diploma in Social Work (if conferred before 2009) or Postgraduate Diploma in Social Work with B+ average.	Beginning of any month*	Full-time: 1 year Part-time: up to 3 years
Doctor of Philosophy PhD	The PhD comprises advanced research presented in a thesis. For more details, see page 12 .	Bachelor's degree with first or second-class division 1 honours, or master's degree with first or second-class division 1 honours, or equivalent.	Beginning of any month	Full-time: 3-4 years Part-time: 4.5-6 years

* December and January starts are not recommended.



“I’m really passionate about justice and I love that social work is all about overcoming barriers, fighting injustice, advocating for clients, empowering people.”

Kim
Master of Social Work (Applied)

Hauora Reo | Speech and Hearing



UC's staff are internationally recognised for their research in communication sciences and disorders.

Te Kura Mahi ā-Hirikapo | School of Psychology, Speech and Hearing serves Aotearoa and the world through excellence and innovation in scholarship, teaching, and public service. Students are educated and challenged to excel in professional practice and research related to disorders of hearing, speech, language, and swallowing.

Staff provide a national resource centre for information and continuing professional education in the field. Each year a number of distinguished scholars, including Erskine Fellows, come from around the world to lecture and conduct seminars at UC.

The Master of Audiology at UC is accredited by NZ Audiological Society, and the Master of Speech and Language Pathology is accredited by the New Zealand Speech-Language Therapists' Association.

Research

Te Kura Mahi ā-Hirikapo | School of Psychology, Speech and Hearing has three research laboratories; Te Puna Whakaora Rehu Ohotata Rose Centre for Stroke Recovery, UC Speech Labs, and the Child Language Centre. Many of our researchers are also part of the multidisciplinary Te Kāhui Roro Reo | New Zealand Institute of Language, Brain and Behaviour, based at UC.

Resources and partnerships

- The School has four on-campus laboratories featuring the latest electronic and assessment equipment.
- The School is a partner in the UC-hosted Te Kāhui Roro Reo | New Zealand Institute of Language, Brain and Behaviour.
- Te Puna Whakaora Rehu Ohotata | Rose Centre for Stroke Recovery, and research at St George's Medical Centre, is a UC initiative to link research with the clinical health community.
- Postgraduate students participate in clinics at public hospitals, schools, and centres, providing a multitude of options for working with clients of all ages with speech and hearing disabilities.
- From January to June 2023, we have had over 2,500 client appointments in our Child Pediatric Hearing Service (on a CDHB-funded grant), Audiology, Speech and Language, and Psychology clinics.

Career opportunities

The speech-language therapy profession offers a range of career opportunities. Graduates are highly employable as clinicians both in Aotearoa and overseas.

You can work with people in a research laboratory, a private clinic, or a government agency. You can work with children who experience language delays, or with elderly stroke patients in a large hospital or nursing home. You can be an entrepreneur, developing and marketing new communication devices and tests, or build your own private practice. You can teach at a university, or conduct research in a scientific laboratory.

www.canterbury.ac.nz/careers

Te Kura Mahi ā-Hirikapo | School of Psychology, Speech and Hearing

T: +64 3 369 4333

E: psyc-speech-hear@canterbury.ac.nz
www.canterbury.ac.nz/science/schools/psyc-speech-hear



Graduate and postgraduate programmes

Qualification	Description	Requires	Start date	Duration
Master of Audiology <i>MAud</i>	The MAud includes coursework and clinical and research experiences. It involves training professional clinical audiologists with an emphasis on the development of clinical skills relating to the practice of audiology.	BSLP(Hons), BA, BSc; other bachelor's degrees also considered. A special application is required; applications close on 1 October .*	February	Full-time: 2 years Part-time: up to 4 years
Master of Science majoring in Speech and Language Sciences <i>MSc</i>	The MSc includes independent research presented in a thesis, which is completed concurrently with one advanced course in either clinical management or research design. A non-clinical, research-only pathway is available to students with a 4-year undergraduate degree in a related discipline. This prepares graduates for clinical supervision and/or research, entry to a doctorate programme, or to assume leadership roles.	BSLP(Hons) or other qualifying programme. Liaise with department postgraduate coordinators to find out more about GPA requirements. Applications close on 1 November .	February	Full-time: 1–2 years
Master of Speech and Language Pathology <i>MSLP</i>	This professional qualification is accredited by the New Zealand Speech-Language Therapists' Association. It includes clinical experience with clients of all ages. Study areas include swallowing, fluency and voice, clinical linguistics, and speech and language development and disorders.	Any bachelor's or master's degree (although not suitable for those graduates with a degree specialising in speech and language therapy/pathology). A special application is required; applications close on 1 October .*	February	Full-time: 1–2 years Part-time: up to 4 years
Doctor of Philosophy majoring in Audiology or Speech and Language Sciences <i>PhD</i>	The PhD comprises advanced research presented in a thesis. See page 12 for more information on PhDs.	Bachelor's degree with first-class or second-class division 1 honours or master's degree with first or second-class division 1 honours, or equivalent.	Beginning of any month	Full-time: 3–4 years Part-time: 5–6 years

* NOTE: Applications close October 1st, but those received before August 1st may be considered for early admission. Final application results may not be available until November. If you are also applying for admission to the University, please ensure you apply several weeks before this date to allow time for your application to be processed.



“I love working with people and seeing the looks on their faces when something progresses or improves. I have seen a man drink water for the first time in years, a boy eat his first meal, and multiple people gain peace of mind from passing various assessments. In doing research I get the opportunity to be the first person to see and know things.”

Paige

Master of Speech and Language Pathology,
PhD in Speech and Language Sciences

Conversion qualifications



If you are looking to change the area of your study or move into a different career, we have many ‘conversion’ qualifications for that purpose.

At UC, we have many conversion certificates, diplomas, and master’s degrees to choose from, depending on your subject interests, work experience, and how long you want to study for. There are two types of conversion qualifications:

- open entry, anyone with a bachelor’s degree across the University can apply (with a B or B+ average at 300-level)
- some entry requirements, like having a bachelor’s degree in a specific subject area, completing relevant courses, or having practical or professional experience before applying

List of conversion qualifications with open entry:

Graduate diplomas

- Graduate Diploma in Arts
- Graduate Diploma in Commerce
- Graduate Diploma in Journalism
- Graduate Diploma in Science
- Graduate Diploma in Strategic Communication
- Graduate Diploma in Teaching and Learning (Early Childhood)
- Graduate Diploma in Teaching and Learning (Primary or Secondary)

Postgraduate certificates

- Postgraduate Certificate in Antarctic Studies
- Postgraduate Certificate in Business
- Postgraduate Certificate in Product Innovation
- Postgraduate Certificate in Youth and Community Leadership

Postgraduate diplomas

- Postgraduate Diploma in Applied Data Science
- Postgraduate Diploma in Business
- Postgraduate Diploma in Business Information Systems
- Postgraduate Diploma in Teaching and Learning (Primary or Secondary)
- Postgraduate Diploma in Youth and Community Leadership

Master’s degrees

- Master of Applied Data Science
- Master of Business (in Marketing, Management, or Financial Management)
- Master of Business Information Systems
- Master of International Relations and Diplomacy
- Master of Policy and Governance
- Master of Product Innovation
- Master of Professional Accounting
- Master of Speech and Language Pathology
- Master of Strategic Communication
- Master of Teaching and Learning (Primary or Secondary)
- Master of Teaching English to Speakers of Other Languages



List of conversion qualifications with some entry requirements:

Honours degree

- Bachelor of Commerce with Honours

Postgraduate certificates

- Postgraduate Certificate in Digital Humanities
- Postgraduate Certificate in Education
- Postgraduate Certificate in Health Sciences
- Postgraduate Certificate in Information Systems and Technology
- Postgraduate Certificate in Sport Science
- Postgraduate Certificate in Translation and Interpreting

Postgraduate diplomas

- Postgraduate Diploma in Business Administration
- Postgraduate Diploma in Child and Family Psychology
- Postgraduate Diploma in Clinical Psychology
- Postgraduate Diploma in Education
- Postgraduate Diploma in Engineering Management

- Postgraduate Diploma in Health Sciences
- Postgraduate Diploma in Information Systems and Technology
- Postgraduate Diploma in Sport Science
- Postgraduate Diploma in Translation and Interpreting

Master's degrees

- Master of Arts in Child and Family Psychology
- Master of Applied Finance and Economics
- Master of Applied Translation and Interpreting
- Master of Audiology
- Master of Business Administration
- Master of Commerce
- Master of Disaster Risk and Resilience
- Master of Education
- Master of Education in Child and Family Psychology
- Master of Engineering Management
- Master of European Union Studies
- Master of Financial Engineering
- Master of Health Sciences
- Master of Health Sciences (Nursing)
- Master of Health Sciences Professional Practice (180-point coursework master's)

- Master of Human Interface Technology
- Master of Linguistics
- Master of Māori and Indigenous Leadership
- Master of Organisational Psychology
- Master of Science in Child and Family Psychology
- Master of Social Work (Applied)
- Master of Sport Science
- Master of Te Reo Māori
- Master of Water Resource Management
- Master of Writing
- Professional Master of Geospatial Science and Technology

To see entry requirements for each of these qualifications, go to **pages 14-62**, or go to **www.canterbury.ac.nz/graduate-school/change-direction**

Whakangungu Ngaiotanga UC Executive Education



Whakangungu Ngaiotanga | UC Executive Education aims to be New Zealand's most relevant and impactful professional development provider, designing courses for a constantly changing world.

We develop and deliver inspiring teaching experiences for managers, team leaders and executives to take away practical tools and use in their businesses immediately.

Our short courses and bespoke programmes build the skills needed to thrive in complex environments, helping businesses manage their current and future potential challenges, and realise opportunities in a world where the pace of change is faster than it's ever been.

Short courses

Our short courses are designed for individuals seeking to build their skills and elevate their career prospects. Subscriptions for courses will be available soon for businesses wanting excellence for their employees.

List of short courses

The 10 Behaviours of Successful People
Achieving Business Sustainability
A Pragmatic Approach to Cyber Security
The Art of Epic Communication
Critical Thinking Masterclass
Design Thinking
Digital Transformation Fundamentals
Empowerment Through Delegation
Essential Coaching Skills
Flicking the Female Leadership Switch
Future Proofing Logistics & Supply Chain Management
Innovative Procurement Practices
Intellectual Property Strategy Workshop
High Performing Teams
'Kill Your Darlings': Applied Decision Making
Mastering Technology Transition
Negotiation Skills
Product Management Bootcamp
Project Management
Smart Strategies for Modern Supply Chains
Social Media for Social Good
Stakeholder Management for Public Sector
Strategic Selling
The Power of Marketing and Creativity
Think Like a Futurist
Understanding the Cryptoverse

New courses are regularly added – for more information, visit [canterbury.ac.nz/business/execed/short-courses](https://www.canterbury.ac.nz/business/execed/short-courses)

Bespoke programmes

UC's Executive Education team has expertise across a wide range of disciplines, meaning we can develop tailored programmes for you and your teams that address your unique business or organisational challenges and goals.

Whakangungu Ngaiotanga UC Executive Education

www.canterbury.ac.nz/business/execed

“I came away having not only met some amazing people, but also with the confidence to put to use the tools provided, both as a leader and personally.”

Jen
CFO

Tuihono UC | UC Online



Tuihono UC | UC Online offers university courses, micro-credentials, and programmes specifically designed for online learning.

Grow your career

Whether you're looking to gain professional accreditation, steer your career in a new direction, or upskill within your current role, UC Online has a range of courses to help you expand your professional toolkit – without disrupting your schedule.

Our 2024 intakes are January, April, July, and October, so you can plan your next career move.

Choose from a range of online learning options, from short CPD courses, micro learning, to full degree programmes developed by industry experts to fit in with busy lives. Your learning is directly supported by specialist instructors, facilitators and learning designers.

Accessible, flexible, and supportive

All our courses are specifically designed for learning online and delivered using the latest online learning technology. With a focus on adaptability and accessibility, we make it easy to extend your learning and expand your professional skills.

Tuihono UC | UC Online has a strong focus on tiakitanga, pastoral care and support of our learners. Our team supports our students to complete their study, and to help them feel connected in an online learning world.

Wide range of subjects – from Criminal Justice to Nursing

We have a wide variety of subjects available, from criminal justice, wellbeing, instructional design, teaching, GIS, as well as a course exploring the history of Aotearoa: Ngā Herenga. We are also developing online postgraduate programmes around in-demand areas such as nursing, strategic leadership, and applied data science. Working closely with industry experts, our courses are designed to balance study with work and life.

Courses include:

Professional development courses

- Academic Writing Basics
- Ngā Herenga

Micro-credentials

- Data Ethics
- Design for Online Learning
- Disaster Law
- GIS for Mapping
- Instructional Design Basics

- Lifestyle and Wellbeing
- Mentoring Pre-Service Teachers
- Nutrition and Wellbeing
- Project Management Fundamentals
- Psychology and Wellbeing
- Shifting Business to Net Zero
- Understanding Child Behaviour

For the most up-to-date list of online courses, visit www.uconline.ac.nz

Unique Master of Organisational Psychology

With a focus on employee wellbeing and organisational effectiveness, our online Master of Organisational Psychology will equip you with the tools to enhance motivation, performance, and satisfaction in the workplace.

Coordinated by an expert team within UC, this master's programme is built on evidence-lead approaches to employee wellbeing and organisational effectiveness.

Study to be a nurse online

We will be offering a master's degree pathway to becoming a registered nurse in 2024. Learning will be online, supported by study blocks and a substantial clinical practice module.

Postgraduate programmes

Please check the Tuihono UC | UC Online website for the most up-to-date requirements for the qualifications below.

Qualification	Description	Requires	Start date	Duration
Postgraduate Certificate in Strategic Leadership <i>PGCertStratLdrship</i>	Are you a manager or leader? Study online and build your business and leadership knowledge, skills, and capabilities. Learn to recognise opportunities and develop core business skills in planning, project management, and teamwork. Explore business at all levels, including individually-owned small businesses, social enterprise, high-tech focused startups, and large corporations using innovation to gain advantage.	At least five years of practical, professional, or scholarly work experience of an appropriate kind, and approval by Executive Dean of Business or delegate.	January, April, July, or October	Full-time or part-time: up to 3 years
Postgraduate Diploma in Applied Data Science <i>PGDipADS</i>	Data and analytics are integral to organisational decision-making, but many decision makers lack skills and know-how in managing data. Build your data science capabilities without needing a background in maths or statistics. A condensed programme that gives you advanced skills and knowledge to succeed in, challenge, and continuously improve data science practices.	B Grade Point Average in your 300-level bachelor's degree courses, or evidence of achievement at postgraduate level.	January, April, July, or October	Full-time or part-time: up to 4 years
Master of Organisational Psychology <i>MOrgPsyc</i>	Achieve expertise in Organisational Psychology and drive positive change in your workplace. From designing job structures to selecting top talent, this programme covers a wide range of essential skills needed for today's leaders.	Bachelor's degree with major or minor in Psychology with B grade average, or bachelor's degree with major or minor in Psychology and at least 2 years' professional, practical or scholarly experience in relevant field, or bachelor's degree or equivalent with at least 5 years' experience in relevant field.	January, April, July, or October	Full-time or part-time: up to 5 years
Master of Health Sciences (Nursing) <i>MHealSc(Nursing)</i>	Make a difference in the lives of others in your community, either locally or internationally, and progress into an exciting career that builds on your critical thinking and relational skills. Learn all the critical competencies to apply to be a registered nurse, and refine your practical skills in a supportive, local programme.	A previous relevant bachelor's degree or appropriate health professional qualification with good grades (normally a B Grade Point Average or better), and approval to enrol; or a postgraduate certificate or diploma in relevant area. Note: Some conditions may be waived if you already have practical or professional experience in the field. There may be special requirements based on access to clinical learning experiences.	February	Full-time: 2 years

Tuihono UC | UC Online
E: info@uconline.ac.nz
www.uconline.ac.nz

Lifestyle and support



Accommodation

UC offers a postgraduate living environment to support you in your studies.

Apartment-style living

All our accommodation options offer a safe and supportive living/learning environment on campus. You will have your own fully furnished room and share kitchen/living, bathroom, and laundry facilities with other students of similar age and level of study. There are three options for students undertaking postgraduate study:

Hayashi

Hayashi offers a quieter living environment, for students beyond their first year of study. Each two-storey townhouse has a mixture of single and double rooms with a limited number of ensuite rooms and self-contained studio units for couples. Hayashi, located on the Dovedale campus, is a 15-minute walk to main campus facilities.

Ilam Student Accommodation

With individual students of all ages, at all levels of study, and from all over the world, Ilam offers a large diverse community and is just 5 minutes' walk to the Ilam campus. There are three apartment types – Mānuka, Kōwhai, and Hīnau.

Sonoda Christchurch Campus

Located adjacent to Hayashi, Sonoda offers 108 single rooms in five-bedroom apartments for students beyond their first year of study. The hall is surrounded by Japanese-inspired landscaped grounds providing a peaceful environment to live and study.



Take a look inside

View our rooms, facilities, and 360 degree panoramas online

www.canterbury.ac.nz/life/accommodation/halls/360-panoramas

Students with accessibility needs

UC is committed to assisting students with accessibility needs. If you have a specific requirement, please advise us in your application so we can ensure that your needs are met.

Couples and Families

If you are travelling with your partner and/or family, please refer to www.canterbury.ac.nz/life/accommodation/couples-and-families as accommodation on campus is very limited. It is likely that you will be required to source a room or property off campus.

Postgraduate Flexi Start

If you are arriving outside standard semester dates (January–June or July–December), you can apply for a postgraduate flexi start. This enables you to indicate your arrival date so the hall can adjust your start date to align with your arrival date.

www.canterbury.ac.nz/life/accommodation/postgrad

How to apply

An online application form is required, selecting either the 2024 Academic Year, 2024 Semester 1 only, or 2024 Postgraduate Flexi Start. Academic Year applications are prioritised over Semester 1.

Couples and families can apply for 2024 Couples/Family Accommodation. Please check if you are required to provide a reference.

www.canterbury.ac.nz/life/accommodation/halls/apply

Halls of residence are affiliated to UC through a contract and pastoral care collaboration. Your contract is directly with the hall of residence with standards and expectations as set out in the Village Rules. www.unilodge.com.au/student-accommodation-christchurch-sonoda/faq

Homestay

Homestay is living with a local family in their home providing you with your own fully furnished room and meals. Homestay is \$300 per week plus a one-off \$350 placement fee.

www.canterbury.ac.nz/life/accommodation/homestay-and-private-board



See the 2024 UC Accommodation Guide at www.canterbury.ac.nz/publications/key-publications/get-started-at-uc/accommodation-guide

Private renting

Rent can range from \$450 per week for a two-bedroom house to \$1,100 per week for a five plus-bedroom house.*

Set up costs for an empty property include:

- 1–4 week's rent as bond.
- 1–2 week's rent in advance.
- Power and internet.
- Furniture and/or whiteware (if unfurnished).
- Contents/liability insurance.

Temporary accommodation is required on arrival as you must not sign for a room or property without viewing it personally.

For information on starting a tenancy, market rent, and rights and responsibilities, refer to www.tenancy.govt.nz

* Source: Tenancy Services.

Te Ratonga Nohonga Accommodation Services

T: +64 3 369 3569

E: accommodation@canterbury.ac.nz

www.canterbury.ac.nz/life/accommodation

Support

UC is committed to helping you succeed in your studies and university life by providing you with a wide range of support services.

Your support teams

Te Pokapū Pūkenga Ako | Academic Skills Centre (ASC)

Take your writing and presenting to the next level to effectively communicate the depth and significance of your research. ASC is a free advisory service that can show you how at all stages of your postgraduate study.

www.canterbury.ac.nz/support/asc

Te Ratonga Whaikaha | Student Accessibility Service

If you have a disability or a long-term medical condition, any permanent or temporary impairment, or any condition that may affect your study, get in touch with the Student Accessibility Service to discuss support.

www.canterbury.ac.nz/accessibility

Atawhai Ākonga | Student Care

Need to talk? Feeling like you're struggling? Or simply need to vent? Student Care is **your** support team, throughout your journey at UC, including off campus (distance) students.

Things we help with include managing motivation and procrastination towards your studies, work/study balance, health and wellbeing, older student and postgraduate needs, financial hardships, accommodation or rental issues, and more.

Whether you are an international or domestic student, we can confidentially talk with you about your situation, help you to figure out your options, and work out the best way forward.

www.canterbury.ac.nz/support/needtotalk
E: studentcare@canterbury.ac.nz



Support for Māori, Pacific, and Rainbow students

We have trained student advisors who can support you throughout your time here, whether that's with tutoring, wellbeing, social support, hardship funding, or any other help you need.

We also have many events where you can connect with other students and be a part of our diverse community.

Our rainbow team also offers transition related support and advice. QCanterbury is UC's resident queer club on campus, with a key focus on creating safe social spaces for sexuality and gender diverse students at UC. We also have a dedicated rainbow room on campus for students to use as a study or hang out space.

www.canterbury.ac.nz/support/equity

Akiaki Ākonga | Student Experience

The UC Mentoring programme can link you with a student mentor who will provide friendly support, and help you to adjust to campus life.

www.canterbury.ac.nz/support/get-support/new/mentoring-programmes

UniLife

UniLife is a free, year-long social mentoring programme, run by students for students who are new to UC, live off-campus, or are international students. We are here to help you find your feet at UC, meet other students, make friends, and explore together what UC and Christchurch/Canterbury has to offer.

We have a specific team in UniLife for postgraduate students, whether domestic or international, of any age or career level.

www.canterbury.ac.nz/support/get-support/new/unilife

Your students' associations

Te Rōpū Ākonga | UCSA

Te Rōpū Ākonga o Te Whare Wānanga o Waitaha University of Canterbury Students' Association (UCSA) is a not-for-profit organisation dedicated to helping students succeed and belong at UC.

Services include advocacy and welfare, a subsidised dental scheme, early learning centres, club support, events, media, and even food outlets on campus.

www.ucsa.org.nz

www.facebook.com/theUCSA

www.instagram.com/ucsa_nz

UC PGSA

The University of Canterbury Postgraduate Students' Association (PGSA) is the only UCSA-affiliated club run 'by postgrads for postgrads'. PGSA supports Te Kura Tāura | UC Graduate School's academic and professional development seminars and lectures.

Social events run by UC PGSA include meet-ups, quiz nights, trips away, and an annual postgraduate ball.

www.ucpgsa.org

Stay healthy

Staying active and feeling well is a big part of success and enjoyment at university.

Te Whare Hauora o UC | UC Health Centre

At UC Health Centre we offer a full range of GP (General Practitioner) services and counselling support to look after your physical and mental health. Registration with the Health Centre is essential for students to access GP services and to receive subsidised medical care.

Counselling service is free for all students irrespective of registration.

Further details such as how to enrol with UC Health Centre and cost per visit are included here: www.canterbury.ac.nz/healthcentre

Te Ratonga Hākinakina | UC Rec & Sport

Make friends, stay active, and be well with activities offered by the team at UC Rec & Sport. Play social sport, join the RecCentre gym, or just drop-in and shoot some hoops to unwind. Sign up for your free membership* and start exploring!

* Basic membership is free to all students and is paid for by your student levy.

www.canterbury.ac.nz/ucreccentre

Need childcare?

Both UC and the UCSA run early learning centres to support students with families.

www.canterbury.ac.nz/earlychildhood

www.ucsa.org.nz/student-support

To read more about all the support services, go to UC's wellbeing hub —

www.canterbury.ac.nz/support/wellbeing-hub

For in-person help, go to Te Pātaka | Student Services Hub, located on levels 2 and 3 in Puaka-James Hight Central Library, and they will direct you to the right place.



“There’s a lot of information on how people can access wellbeing clubs and mental health services at UC, and especially around exam time there’s always a big push to ensure students are looking after their wellbeing.”

Zach
Bachelor of Science with Honours in Psychology



Careers

Postgraduate study can facilitate professional attributes of value in the workplace, such as specialist skills, applied experience, research capability, critical thinking, and higher knowledge.

There are many career benefits from attaining a further qualification, such as entry into some professional occupations, and in some cases higher starting salary/progression rates.

For graduates who wish to fast-track to a specific career straight after their first degree or change occupations further down the track, graduate or postgraduate study could be the ticket to a career that fits your interests, experience, ambitions, and life goals.

Useful starter information

UC has plenty of resources available to you before you commit to further study, and in determining your desired career path.

- Visit www.canterbury.ac.nz/careers to make an informed career decision.
- Read what careers UC students have got into after their studies.
www.canterbury.ac.nz/careers/subjects
- Explore your possible career choices on the Careers NZ website.
www.careers.govt.nz/jobs-database

Applied learning opportunities

There are many opportunities for students to gain work experience and apply skills and knowledge during their course of study, such as internships, clinical and teaching practice, practical and professional work placements, field work, and industry and community projects.

To learn more, go to www.canterbury.ac.nz/study/work-integrated-learning



Talk to the professionals

Te Rōpū Rapuara | UC Careers are professionally qualified career consultants and graduate recruitment specialists. They provide:

- careers information, advice, and guidance
- assistance in making informed decisions
- help with your job search.

Consultants work with groups and are available for individual consultations. With over 2,000 employer connections, UC hosts regular employer information events and career fairs.

www.canterbury.ac.nz/careers

Student work opportunities

Many students work part-time while studying.

- UC Careers advertises a range of relevant student jobs and internships, part or full-time, paid and voluntary. www.nzunitalent.ac.nz
- Te Rōpū Rapu Mahi Taurira | Student Job Search offers an online employment service (even over the summer holidays before you start at UC). www.sjs.co.nz

Tutoring and research

Some departments employ postgraduate students (usually master's or doctoral students) as part-time tutors or research assistants. Contact the department/s as early as possible to discuss such opportunities and look out for adverts on <https://nzunitalent.ac.nz>

International students

Students who want to stay and work in Aotearoa after they have completed their studies may be eligible for a post-study work visa. These are subject to conditions.

www.immigration.govt.nz

Make your experience count

Get a competitive edge with UC's unique Co-curricular Record (CCR), which recognises your participation in pre-approved activities outside the classroom. This demonstrates to future employers that you have been involved with experiences that are not only academic at university.

Activities include working for UC, volunteering, leading a club, or being a class rep.

www.canterbury.ac.nz/life/co-curricular-record-ccr

Te Rōpū Rapuara | UC Careers
T: +64 3 369 2559
E: careers@canterbury.ac.nz
www.canterbury.ac.nz/careers



Apply and enrol

How do I apply and enrol?



How to apply

Postgraduate programmes

Apply for a postgraduate programme online at myUC (<https://myuc.canterbury.ac.nz>). Create an account, register your details, and follow the online prompts. Check what you need at <https://checkwhatyouneed.canterbury.ac.nz>

Courses can be added to your application from **1 October**; applications close on **8 December 2023**.

Some programmes have an earlier closing date and additional application requirements. Please check **page 80** or www.canterbury.ac.nz/enrol/manage/limited

Doctoral studies (PhD, EdD, DMA, DHSc)

Applicants are required to arrange supervision before applying for a doctoral qualification. A comprehensive list of doctoral application requirements are at www.canterbury.ac.nz/enrol/doctoral

Completing enrolment

Domestic students

Domestic students include:

- citizens of Aotearoa New Zealand (includes Cook Islands, Niue, and Tokelau citizens)
- citizens of Australia residing in Aotearoa while studying
- Australia and New Zealand residence class visa holders residing in Aotearoa while studying.

When your admission and application to enrol has been approved, an Enrolment Agreement will be generated. You can review and accept your Enrolment Agreement online via myUC.

Identity documents may be required to match you to the National Student Index.

Fees must be paid in full prior to study commencing; go to the following link for information on payment options: www.canterbury.ac.nz/get-started/fees/pay-your-fees

To see the fees for individual courses, go to www.canterbury.ac.nz/courses

For a guide to fees by programme, see www.canterbury.ac.nz/get-started/fees

International students

If your application is successful, you will receive a Conditional or Unconditional Offer of Place. All conditions must be met before an Unconditional Offer of Place letter is granted.

An Unconditional Offer of Place is required to apply for a Student Visa, together with evidence of prepaid tuition fees. A pro forma invoice is included in an Unconditional Offer of Place.

International students residing in Aotearoa complete their enrolment in person. www.canterbury.ac.nz/enrol/international/inperson

At your enrolment-in-person session, an Enrolment Agreement will be generated. You can review and accept your Enrolment Agreement online via myUC.

Any difference in fees must be paid before enrolment is finalised and study can commence. Go to the following link for information on payment options: www.canterbury.ac.nz/get-started/fees/pay-your-fees

To see the fees for individual courses, go to www.canterbury.ac.nz/courses

For a guide to fees by programme, see www.canterbury.ac.nz/get-started/fees

See **page 76** for more information.



Study fees

There are two types of fees – tuition and non-tuition.

For tuition fees, see www.canterbury.ac.nz/get-started/fees

For non-tuition fees, see www.canterbury.ac.nz/get-started/fees/non-tuition-fees

T: +64 3 369 3999 or 0800 VARSITY (827 748)

T: +64 3 364 3443 (outside NZ)

E: info@canterbury.ac.nz



“UC is such a diverse university in the sense that you can study such a variety of things. I recommend it 100%. I don’t want to leave!”

Stacey

Ngāi Tahu

Master of Teaching and Learning (Secondary)

International students

International students are highly valued at UC, joining more than 100 nationalities on campus.

Given that international students are the majority of UC's doctoral students, this represents a little 'United Nations' dedicated to research and is testimony to UC's reputation as an international research destination. There are many benefits to studying a PhD in Aotearoa New Zealand. See [page 12](#).

Pastoral care code

The Education (Pastoral Care of Tertiary and International Learners) Code of Practice 2021 is designed to guide institutions in their practice, and protect international students when they study in Aotearoa. UC is a signatory to the Code, and is required to meet the standards set by the New Zealand government. Read the full code of practice at www.nzqa.govt.nz/providers-partners/education-code-of-practice

The Code includes minimum standards of non-academic advice and care that UC is expected to provide to our international students, as well as mechanisms to raise concerns if you feel we are not living up to those standards. To learn more about the code and how it supports you visit:

www.canterbury.ac.nz/support/code

www.nzqa.govt.nz/providers-partners/tertiary-and-international-learners-code

Admission requirements

Good grades in an undergraduate degree from an internationally recognised university are required for admission at postgraduate level. You may also need to undertake a transitional or qualifying course before being admitted. You will meet a satisfactory English proficiency level requirement. Students applying for a PhD require a research-focused honours or master's degree with excellent grades.

You can check admission requirements for postgraduate qualifications at <https://checkwhatyouneed.canterbury.ac.nz>



Apply for admission

Apply online at <https://myuc.canterbury.ac.nz>. You will need to upload:

- graduation certificates and academic transcripts for all previous university studies. Originals may be required later to verify admission. Please note many programmes have specific application requirements. See [page 80](#) and the relevant department website for details.
- evidence of English language competence.
- a copy of your curriculum vitae (CV) (required for some qualifications).
- research students will also need to provide details of proposed area of research, previous research and publications, and proof of appropriate supervision.

Recommended application dates

Students applying with international university qualifications should apply as early as possible. If you are in New Zealand, we recommend that you apply before **1 November** for Semester 1 (February start) and before **1 April** for Semester 2 (July start). Research and postgraduate taught students applying from overseas should apply at least six months before the planned start date.

Student visa

International students who study in Aotearoa for longer than three months must have a student visa. Contact Immigration NZ or a Licensed Immigration Advisor/Lawyer for advice and to arrange a student visa before leaving your home country. www.immigration.govt.nz

If you are already in Aotearoa and hold student visa for another qualification, you will need to apply for (and be approved) a new visa for your new course of study before enrolling.

www.immigration.govt.nz/new-zealand-visas/apply-for-a-visa/about-visa/full-fee-paying-student-visa

Add courses

Courses can be added to your application from **1 October** for the following year of study.

Limited entry courses

Some courses are 'limited entry', which means that there is a limit on how many places are available. Application deadlines for these courses can be found on [page 80](#) and at www.canterbury.ac.nz/enrol/manage/limited



Complete enrolment

All new international students complete their enrolment 'in person' in Christchurch at Te Pātaka, Level 3, Puaka-James Hight Library, Ilam Campus. Request online enrolment by emailing thesis-enrolment@canterbury.ac.nz

Master's by thesis and PhD students enrol at the start of an agreed month, with the approval of their supervisor(s) and department.

Taught (course-based) Master's students enrol in the two weeks prior to the commencement of their first semester.

www.canterbury.ac.nz/enrol/international/inperson

Funding your study

International students are eligible to apply for a number of scholarships. See [page 78–79](#).

It is possible for international students to work while they are studying. Conditions apply.

www.immigration.govt.nz/new-zealand-visas/options/study/considering-study-in-new-zealand

International Prospectus

UC's International Prospectus can advise you on:

- English language requirements
- how to gain admission to UC
- visas, medical, and travel insurance
- fees
- on-campus enrolment and orientation
- Ōtautahi Christchurch and Aotearoa New Zealand as places to study and live.

www.canterbury.ac.nz/publications/key-publications/international-students/international-prospectus

Te Tari Hononga ki Tāwāhi
International Relationships Office
T: +64 3 369 4494
E: iro@canterbury.ac.nz
www.canterbury.ac.nz/international

2024/25 International Prospectus

Christchurch | New Zealand



Scholarships

Scholarships are an excellent way of funding your studies and can ease financial strain so that you can focus on your study.

At UC, we have many scholarships funded by multiple sources such as central funds, UC Trusts, UC Foundation, and many generous organisations and individuals.

Start looking early for funding as it may take time to find out if your application has been successful. Our scholarships are found at www.canterbury.ac.nz/scholarships

You should also ask your student advisor for scholarship opportunities in your subject area. For research students, your supervisor may also know of funding in your area.

International students are eligible for many of our scholarships, but often fees are covered at the domestic New Zealand rate. Similarly, part-time study may also be supported by a scholarship, usually at a pro rata basis where this is permitted. Please check the conditions for each scholarship carefully.

Preparing your application

Scholarship applications open approximately eight weeks before their advertised closing dates. To apply:

- review the eligibility criteria (subject/course, level, citizenship, school, region) and required supporting documentation
- complete the appropriate online form
- apply for as many scholarships as you are eligible. You can often hold more than one award at a time.

Other scholarships

- Te Pūkai Tara | Universities New Zealand administers a number of scholarships. www.universitiesnz.ac.nz
- New Zealand Scholarships assist students from developing countries. www.nzscholarships.govt.nz
- Education New Zealand provide research scholarships. <https://enz.govt.nz/funding>
- Industry sponsored awards — contact the relevant College, the Scholarships Office, or UC CareerHub. www.careerhub.canterbury.ac.nz

UC scholarships and awards

Scholarship	Value	Tenure (full-time)
Doctoral level — approximately 150 awards are available		
UC Doctoral Scholarship	\$28,000/year plus tuition fees	Up to 3 years
UC Aho Hīnāture Accelerator Scholarship	\$28,000/year plus tuition fees	Up to 3 years
UC Doctoral Scholarship — for students with disabilities	\$28,000/year plus tuition fees	Up to 4 years
UC Matariki Doctoral Scholarship — for Māori students	\$28,000/year plus tuition fees	Up to 3 years
UC Pasifika Doctoral Scholarship	\$28,000/year plus tuition fees	Up to 3 years
Ngata Centenary Doctoral Scholarship — for Māori students	\$28,000/year plus tuition fees	Up to 3 years
Ngāi Tahu Research Centre Doctoral Scholarships	\$28,000/year plus tuition fees	Up to 3 years
Research Cluster Scholarships — supports research in UC's research clusters	\$28,000/year plus tuition fees	Up to 3 years
Tait Communications Research Scholarship	\$30,000 per annum	Up to 3 years
Brownlie Scholarship — recognises the top doctoral scholarship recipient	\$5,000/year plus doctoral scholarship	Up to 3 years
Roper Scholarship in Science — recognises the top doctoral scholarship recipient in Science	\$5,000/year plus doctoral scholarship	Up to 3 years
William and Ina Cartwright Scholarship — recognises the top doctoral scholarship recipient in Education	\$5,000/year plus doctoral scholarship	Up to 3 years
Master's level — approximately 60 awards are available		
UC Master's Scholarship	\$14,000 plus tuition fees at NZ domestic rate	1 year
UC Master's Scholarship for students with disabilities	\$14,000 plus tuition fees at NZ domestic rate	Up to 2 years
Ngāi Tahu Research Centre Postgraduate Scholarships	Up to \$16,000 plus tuition fees	Up to 2 years
Orion Master's Energy Scholarship	\$16,500	1 year
CWF Hamilton and Co Ltd Master's Scholarship in Mechanical Engineering	\$16,500	1 year
Tait Communications Research Scholarship	\$15,000	1 year
Master's Graduate Women Canterbury (Inc.) Trust Board Scholarship	Tuition fees at NZ domestic rate	1 year
FA Hayek Scholarship in Economics or Political Science	\$16,500	1 year

Note: The information contained in this table is accurate at the time of printing but is subject to change. We recommend you refer to the UC scholarships website (www.canterbury.ac.nz/scholarships) for the most up-to-date information, and for external scholarship opportunities.

UC Scholarships Office

T: +64 369 4900

E: scholarships@canterbury.ac.nz

www.canterbury.ac.nz/scholarships



UC Aho Hīnātore | UC Accelerator Scholarship

We have 70 postgraduate scholarships available for promising students – both current and recent graduates of Aotearoa New Zealand universities – to help them successfully transition to PhD studies at UC.

The UC Aho Hīnātore | UC Accelerator Scholarship is a multi-part award comprising:

- a paid 3-month supervised research project worth \$6,000; then
- a PhD scholarship of \$28,000 per annum plus tuition fees.

In the 3-month project, you will be working with a team of supervisors who are experts in your chosen research area. This will enable you to gauge one another in a safe, low-risk environment. This three-month project is an initiation into the field of research, to pique your interest and to ultimately encourage you to see the value of PhD studies.

Eligibility

If you have finished your studies at UC prior to **April 2024** with a minimum GPA of 7, and qualify for admission to the PhD at a New Zealand university, we will start you off with a \$6,000 scholarship to complete a three-month supervised research project. You must start this project by **1 April 2024** and your Doctoral Studies by **1 July 2024**.

If you do not qualify for direct admission into the PhD programme, then your accelerator project may be the qualifying research experience needed for entry to the PhD, subject to approval by Amo Rangahau | Dean of Postgraduate Research. This approval must be received prior to applying for the scholarship.

Students are ineligible for this award if they are employed full-time; are enrolled in a course during the duration of the project; and/or international students who do not have a valid visa for the duration of the project.

Application process

You can apply with support from your supervisor. As a research team, you must show how your project contributes to knowledge in your chosen field, among other requirements. For the most up-to-date information on the application process and dates, please check: www.canterbury.ac.nz/postgraduate/aho-hinatore-accelerator-scholarship

A panel will determine which students will be awarded the scholarships. Each scholar will be guaranteed a UC Aho Hīnātore | Accelerator PhD scholarship of \$28,000 per annum plus tuition fees (at the domestic rate).

Aho Hīnātore Scholarships will be distributed equitably across academic units, with an additional five for Māori and Pacific/Pasifika students. The remainder of the scholarships will be given to the best applications from across New Zealand.

Aho Hīnātore | Accelerator Scholarship

E: deanpgresearch@canterbury.ac.nz
www.canterbury.ac.nz/postgraduate/aho-hinatore-accelerator-scholarship

Important dates

2023

Oketopa | October

- 1 Applications to enrol for 2024 open
- 15 Some UC Master's and Doctoral Scholarship applications due

Noema | November

- 13 2023/24 Summer Programme starts

2024

Hānuere | January

- 10 Last date for continuing UC domestic students to apply to enrol

Pēpuere | February

- 19 Semester 1 lectures start, and last day to enrol for Semester 1 courses

Kahuru-kai-paeka | March

- 29–21 April: Semester 1 break

Mei | May

- 1 Applications for Accommodation due for a July 2024 start
- 15 Some UC Master's and Doctoral Scholarship applications due
- 31 Semester 1 lectures end

Hune | June

- 10–22 Mid-year examinations and tests

Hūrae | July

- 15 Semester 2 lectures start, and last day to enrol for Semester 2 courses

Ākuhata | August

- 26–8 September: Semester 2 break

Oketopa | October

- 18 Semester 2 lectures end
- 29–9 November: End of year examinations

Noema | November

- 11 2024/25 Summer Programme starts

Note that Teacher Education programmes commence prior to the University Semester 1 start date – information on these dates can be found on the Faculty of Education website: www.canterbury.ac.nz/education

Application dates for programmes requiring a special application

Qualification	Applications due
Master of Engineering (starting in February)	10 January
Master of Engineering (starting in July)	15 June
Master of Engineering in Fire Engineering	1 June (for international students) and 1 December
Master of Antarctic Studies	19 September
Bachelor of Music with Honours – Performance	20 September
Master of Music – Performance	15 September
Postgraduate Diploma in Clinical Psychology	20 September
Master of Social Work (Applied)	30 September
Master of Audiology	1 October
Master of Counselling	
Master of Speech and Language Pathology	
Postgraduate Diploma in Child and Family Psychology	
Graduate Diploma in Journalism	31 October
Postgraduate Diploma in Cognitive Behaviour Therapy	1 November
Master of Science in Industrial and Organisational Psychology	30 November
Postgraduate Diploma in Business Administration	Two weeks before the start of the term
Master of Business Administration	
Graduate Diploma in Teaching and Learning (Early Childhood)	Applications open anytime
Graduate Diploma in Teaching and Learning (endorsed in Primary or Secondary)	(closes 1 December 2023 for domestic students and 31 October for international students)
Postgraduate Diploma in Teaching and Learning (endorsed in Primary or Secondary)	
Master of Teaching and Learning (endorsed in Primary or Secondary)	

Some programmes may require an early Application to Enrol in addition to the special application. Other programmes not listed in this table may require a special application. Check www.canterbury.ac.nz/regulations/general-regulations/enrolment-regulations for detailed application requirements for your intended course of study.

Your notes

UC Contact Centre:

NZ Freephone: 0800 VARSITY (0800 827 748)

T: +64 3 369 3999

E: info@canterbury.ac.nz

University of Canterbury
Te Whare Wānanga o Waitaha
Private Bag 4800
Christchurch 8140
New Zealand

www.canterbury.ac.nz



Proud supporters of:



Tell us what you think of this publication at
publications@canterbury.ac.nz